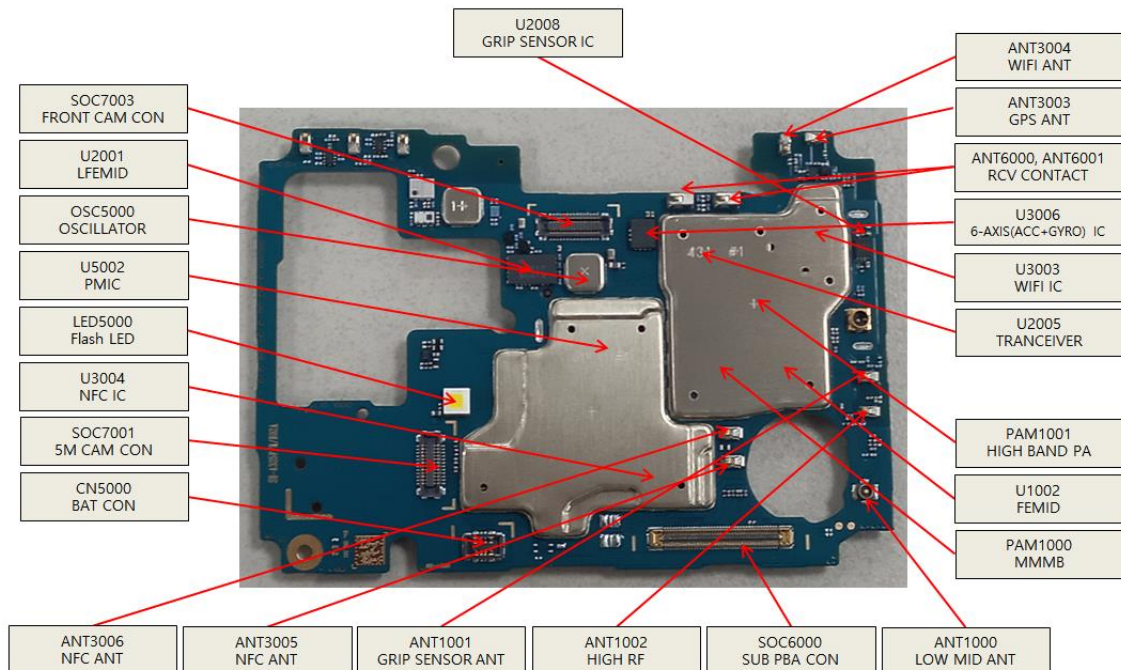


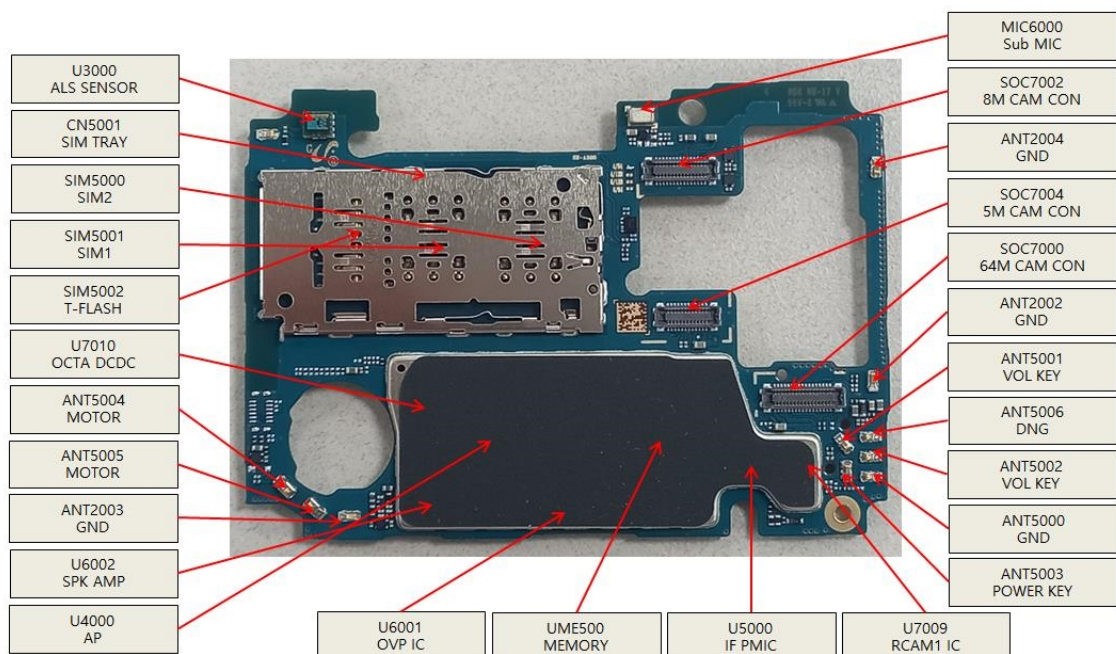
8. Level 3 Repair

8-1. Components Layout

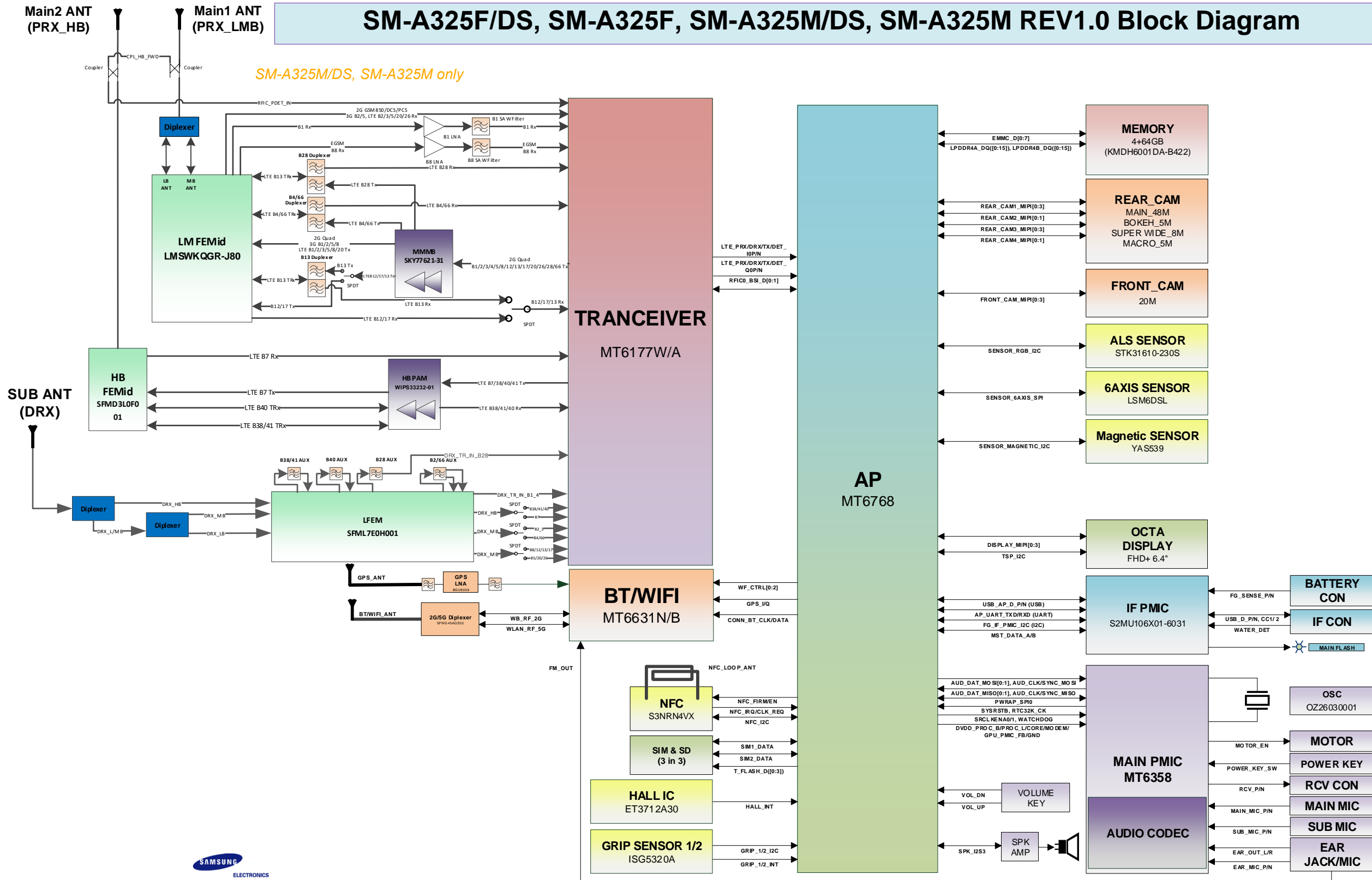
Main PBA Top



Main PBA Bottom



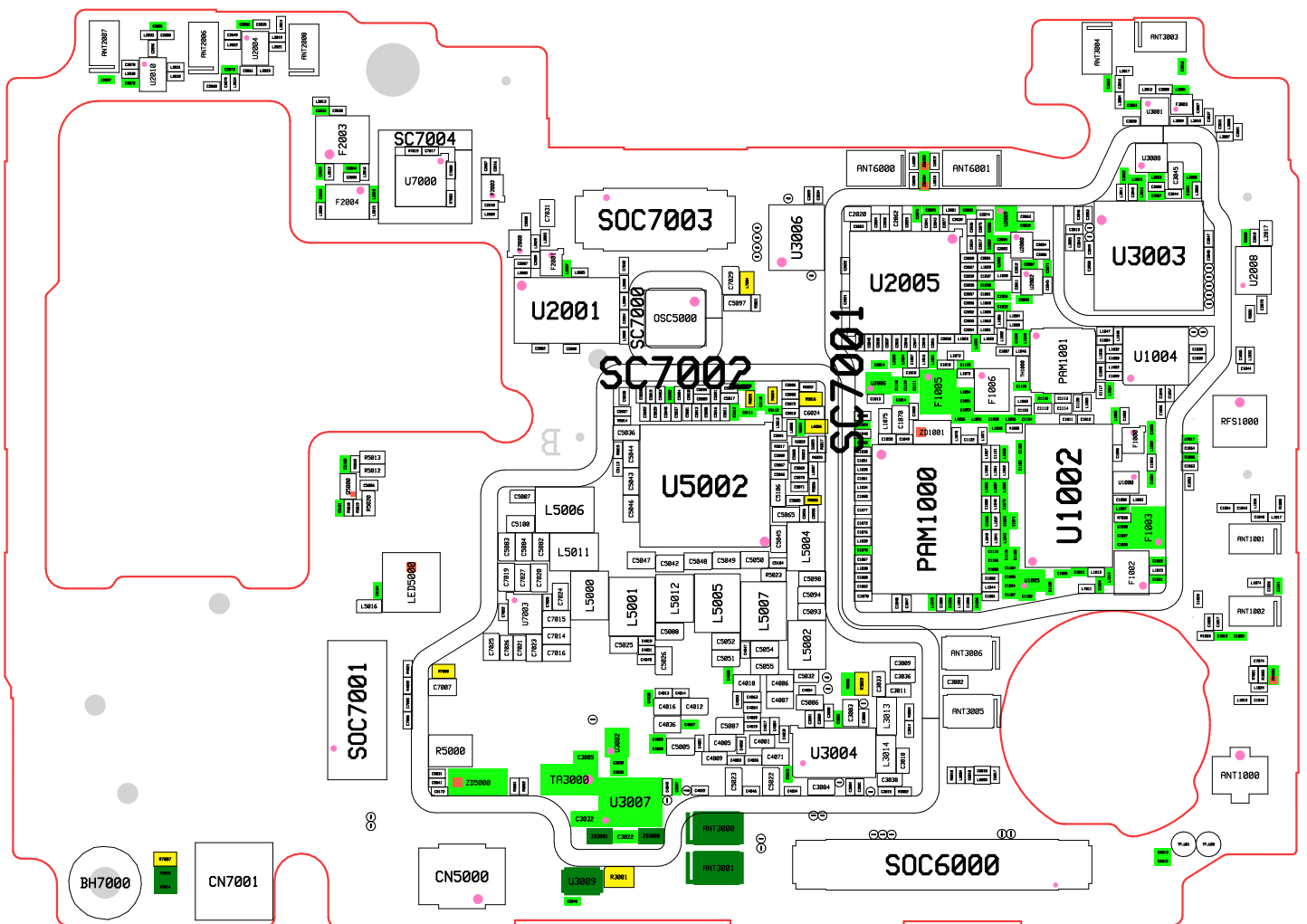
SM-A325F/DS, SM-A325F, SM-A325M/DS, SM-A325M REV1.0 Block Diagram



Model :
Revision :
Manufacture Count :
Charge :
Contact :
Date :
Routing :
Resin :

VX_SETUP(2020-11-25)_HHP

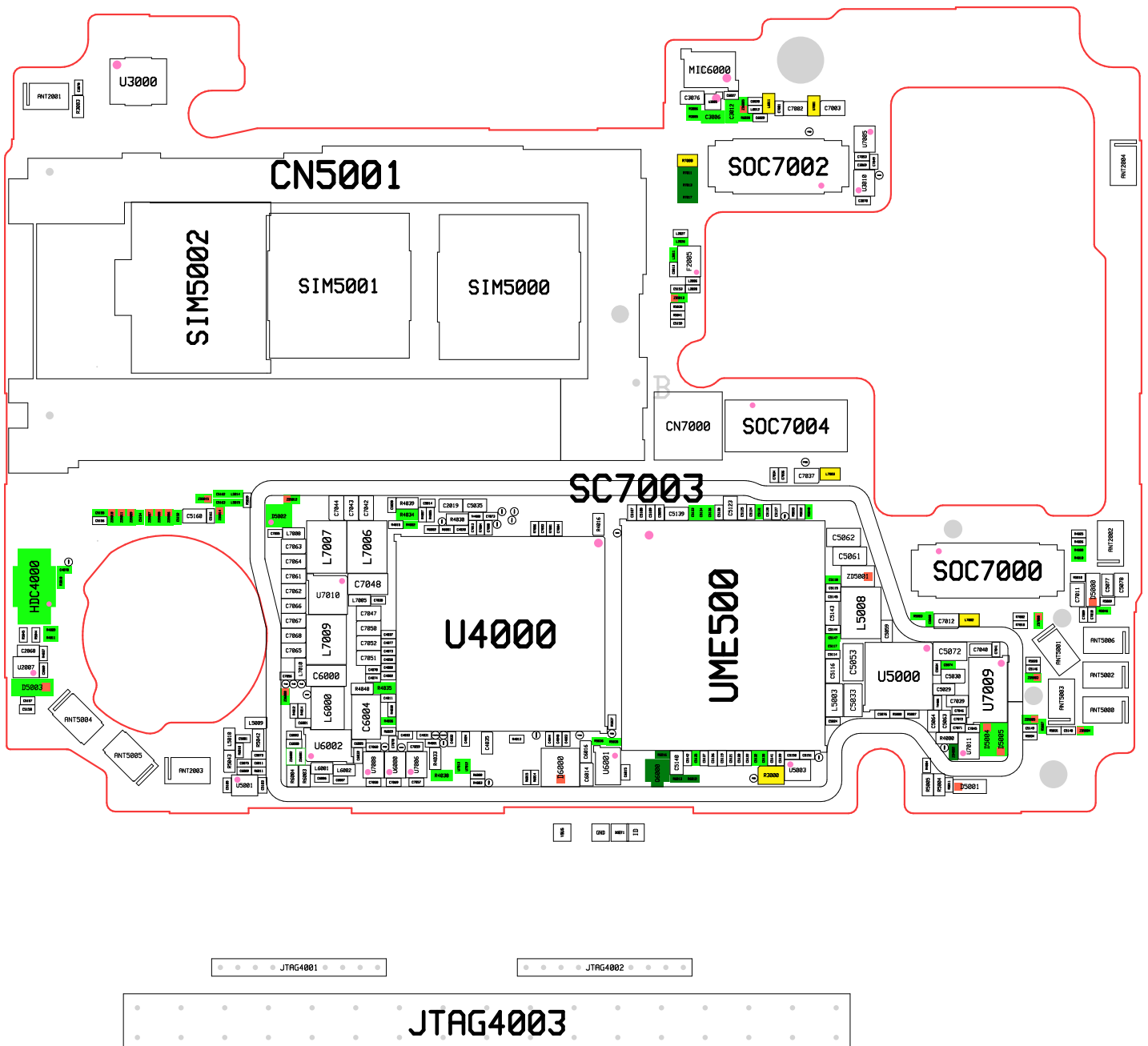
Created date of PCB data : 2020/12/29 14:04:19



Model :
Revision :
Manufacture Count :
Charge :
Contact :
Date :
Routing :
Resin :

VX_SETUP(2020-11-25)_HHP

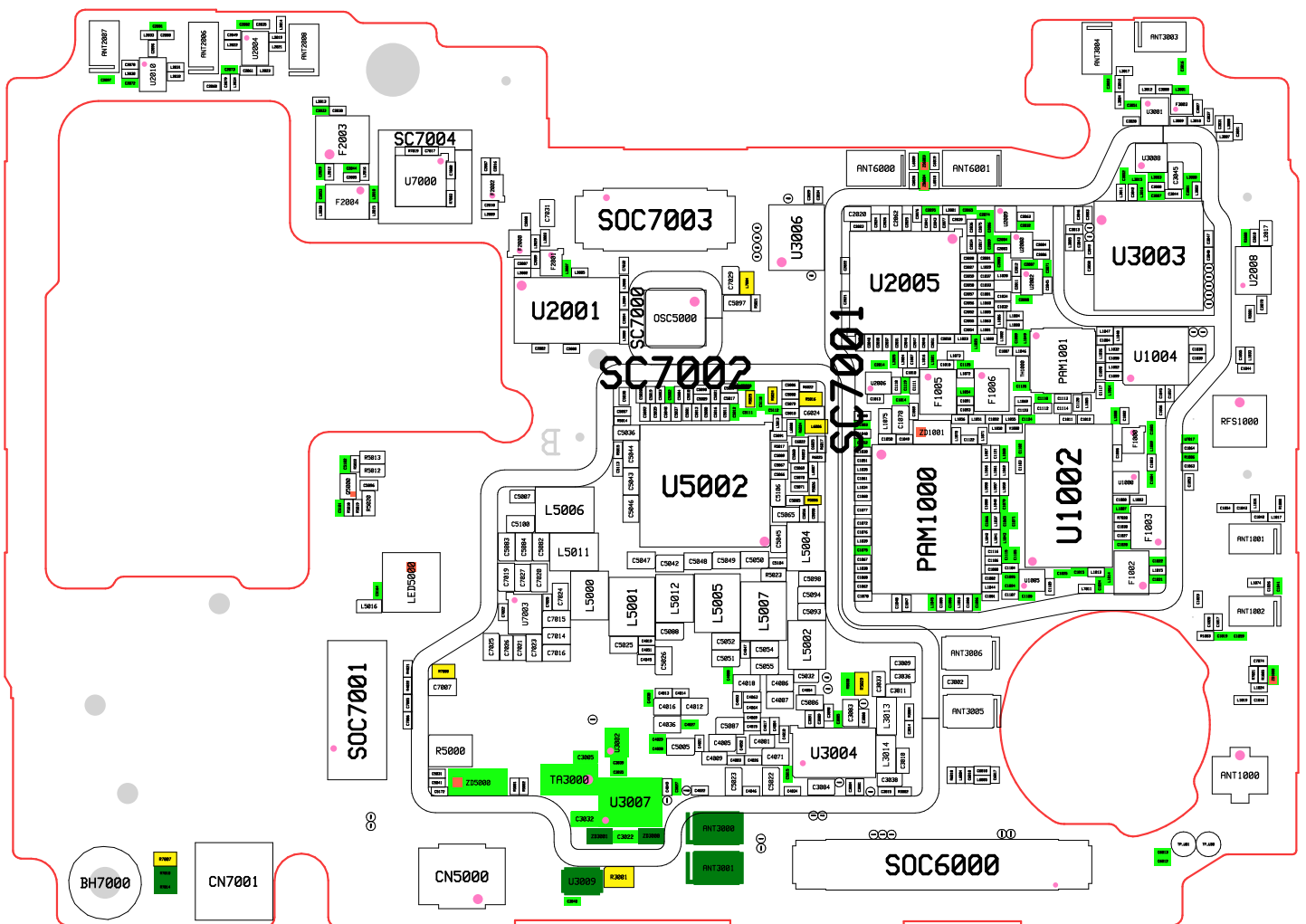
Created date of PCB data : 2020/12/29 14:04:19



Model :
Revision :
Manufacture Count :
Charge :
Contact :
Date :
Routing :
Resin :

VX_SETUP(2020-11-25)_HHP

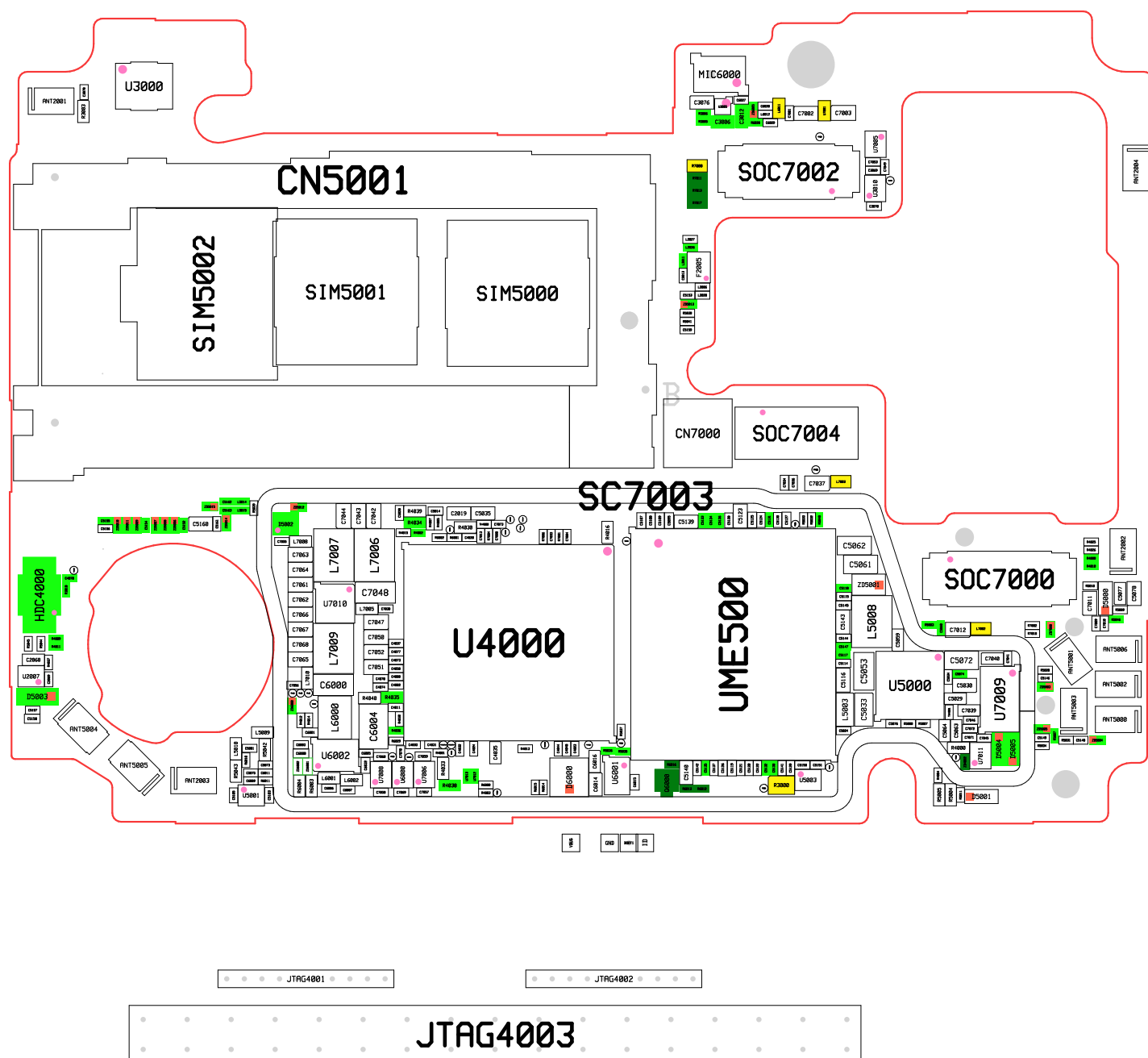
Created date of PCB data : 2020/12/29 14:04:32



Model :
Revision :
Manufacture Count :
Charge :
Contact :
Date :
Routing :
Resin :

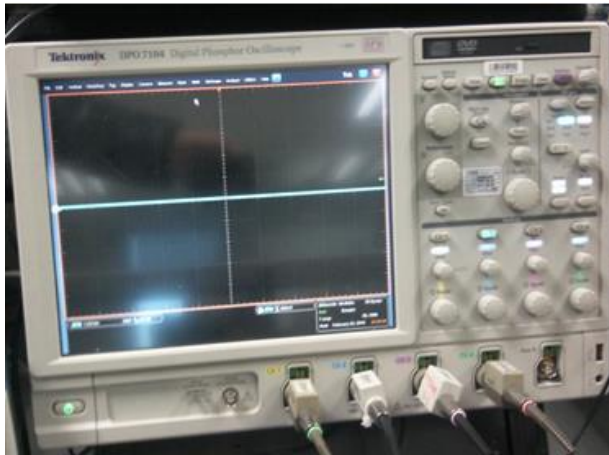
VX_SETUP(2020-11-25)_HHP

Created date of PCB data : 2020/12/29 14:04:32



8. Level 3 Repair

8-3. Flow chart of Troubleshooting.



Oscilloscope



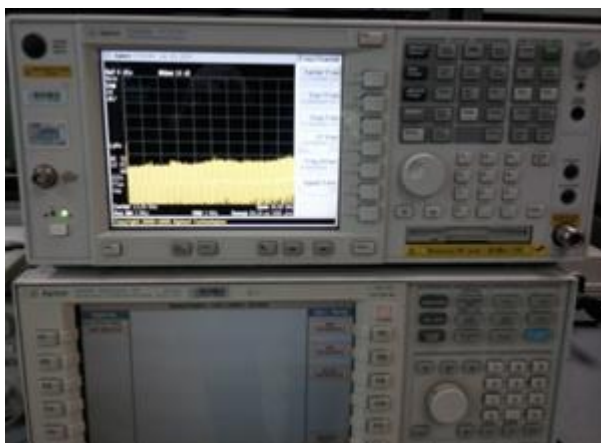
Digital Multimeter



Power Supply



+ driver, ESD Safe Tweezer



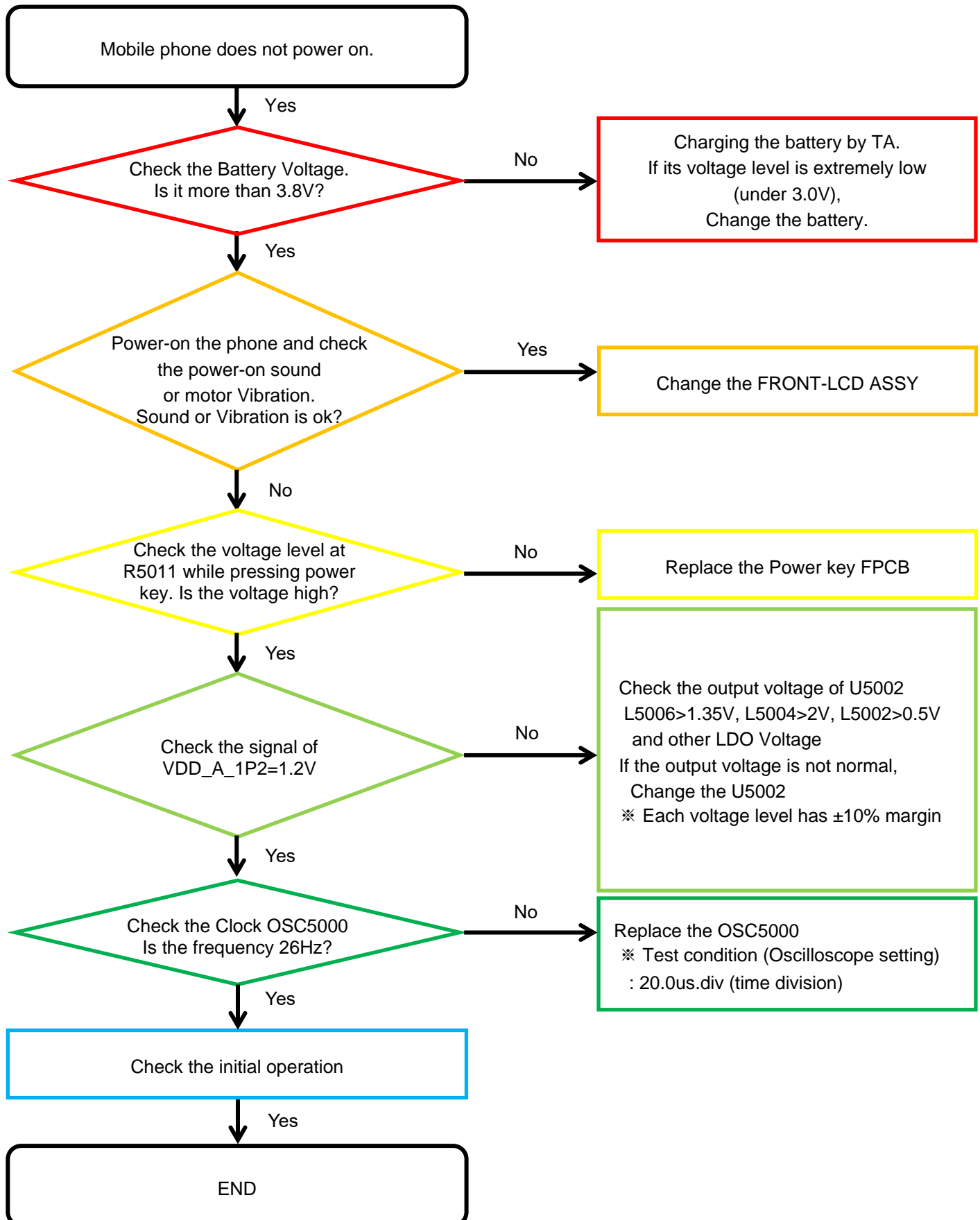
8960 & Spectrum Analyzer



Soldering iron

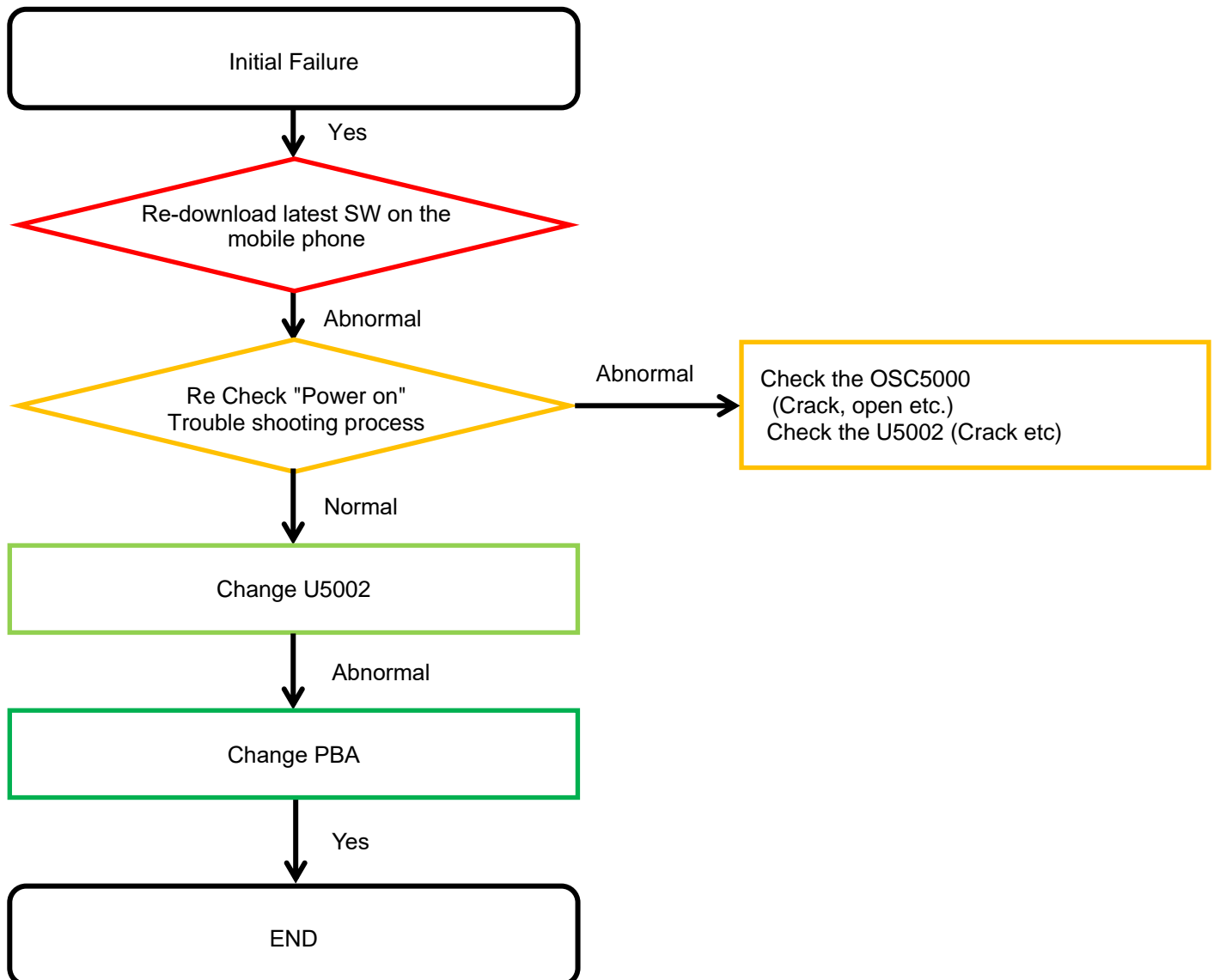
8. Level 3 Repair

8-4-1. Power On



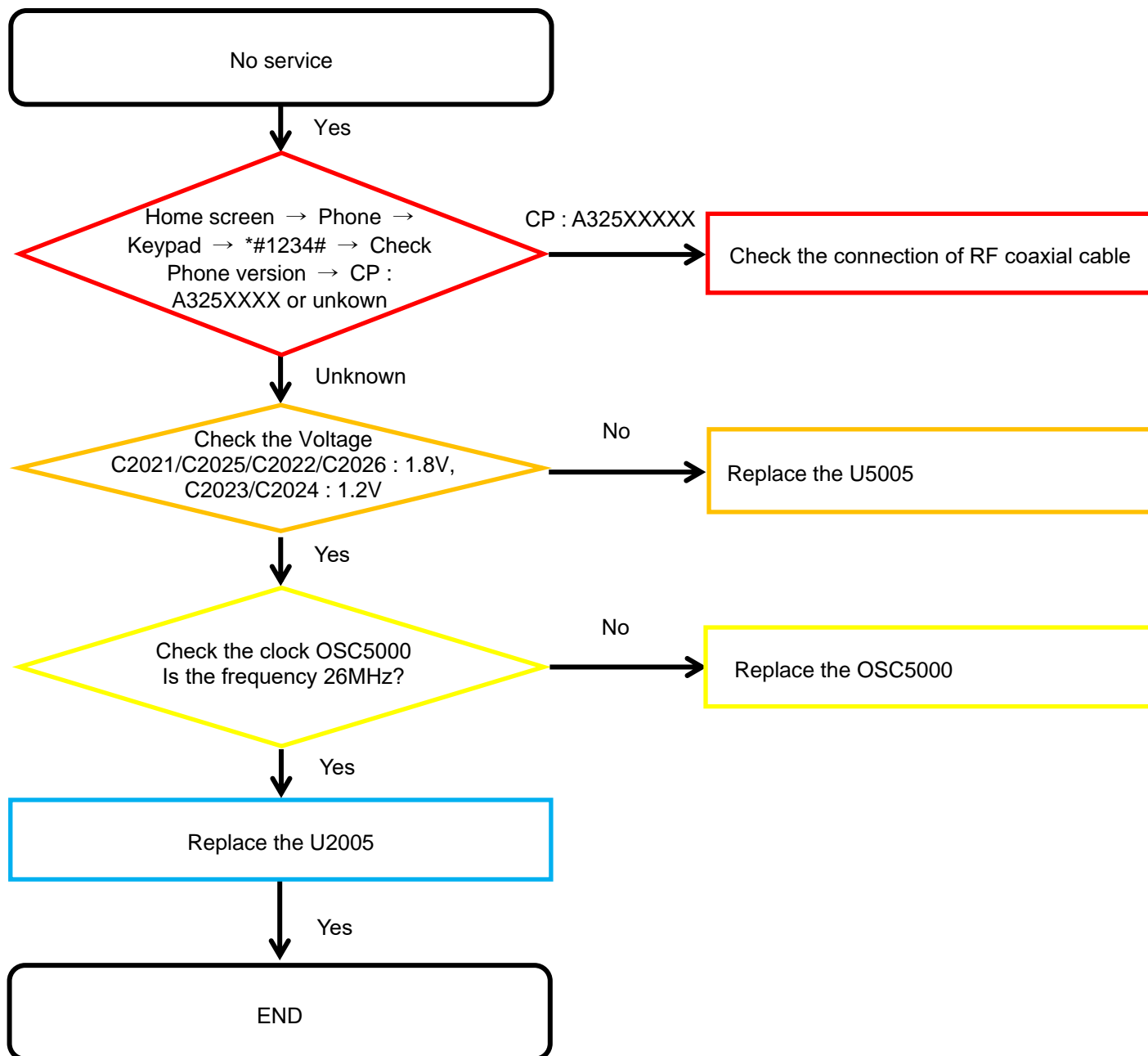
8. Level 3 Repair

8-4-2. Initial



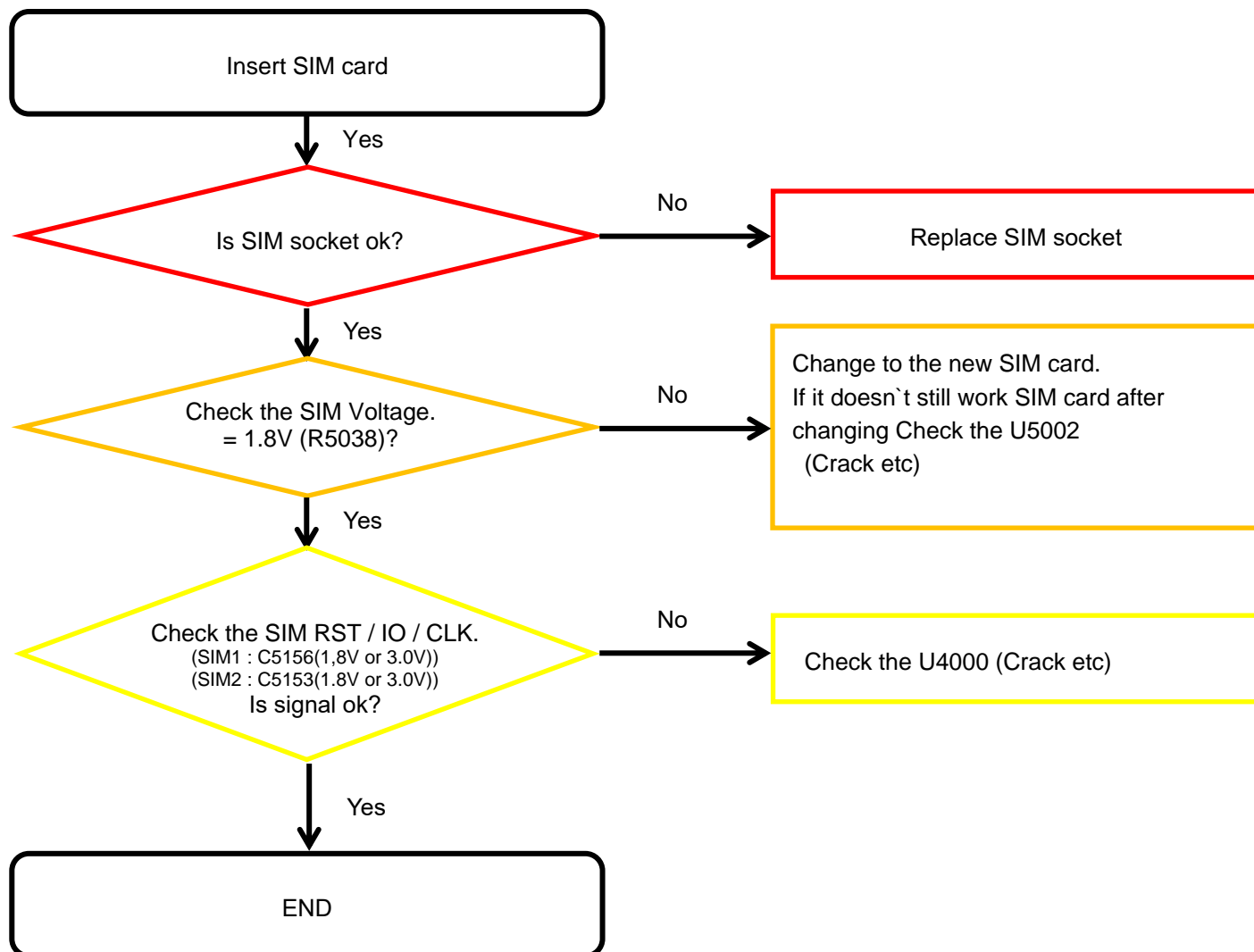
8. Level 3 Repair

8-4-3. No Service



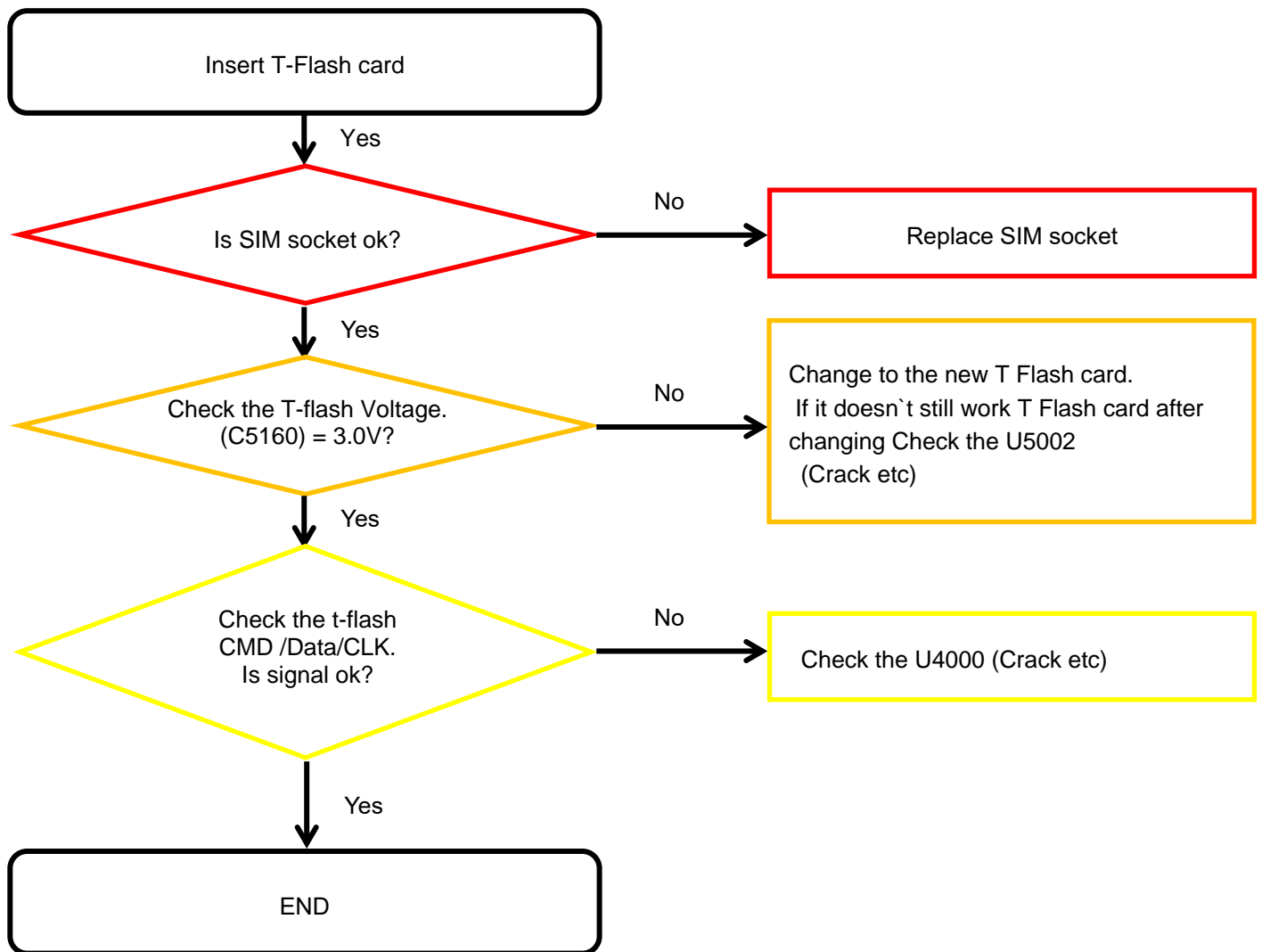
8. Level 3 Repair

8-4-4. SIM Part



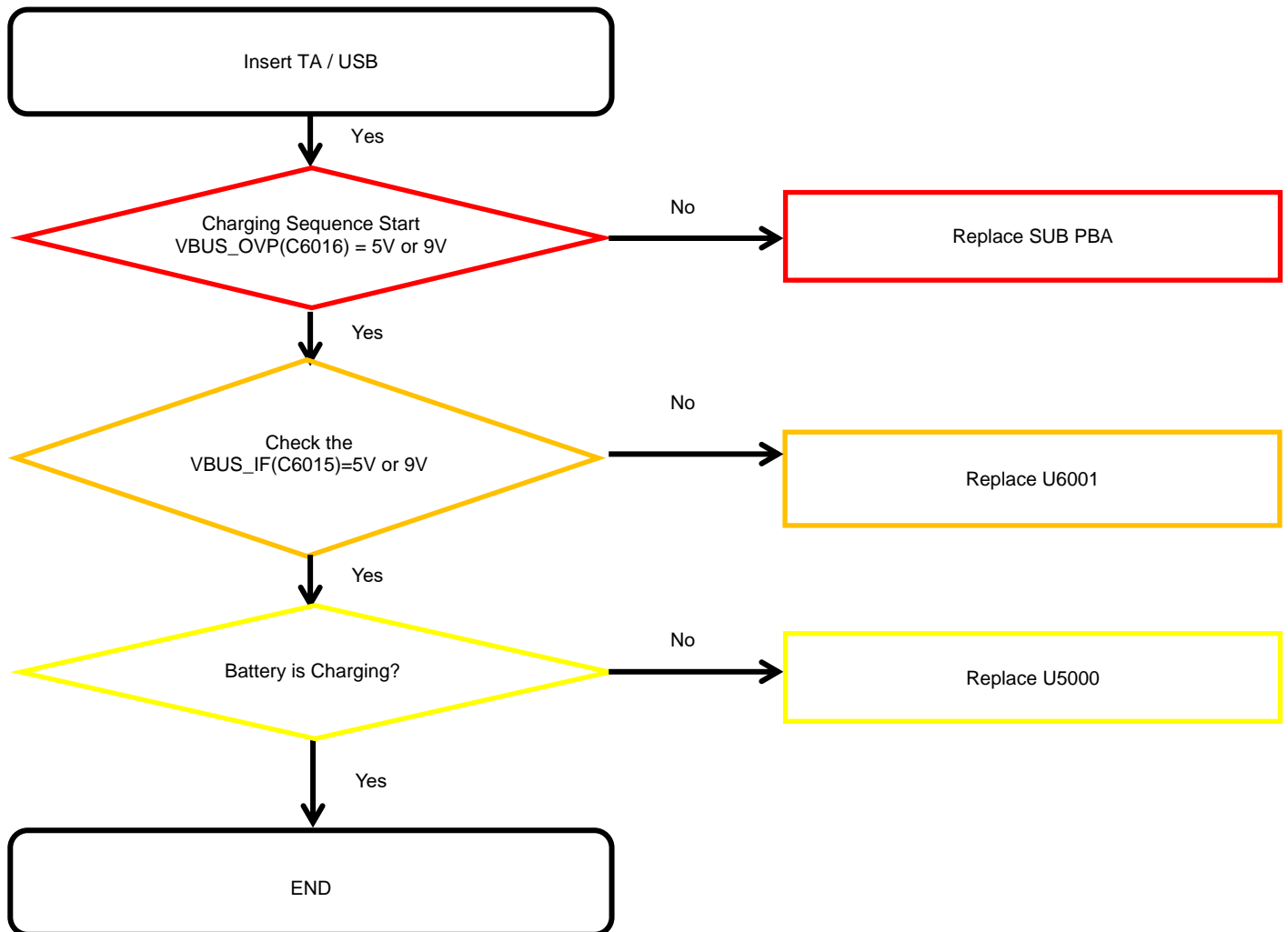
8. Level 3 Repair

8-4-5. T-Flash Part



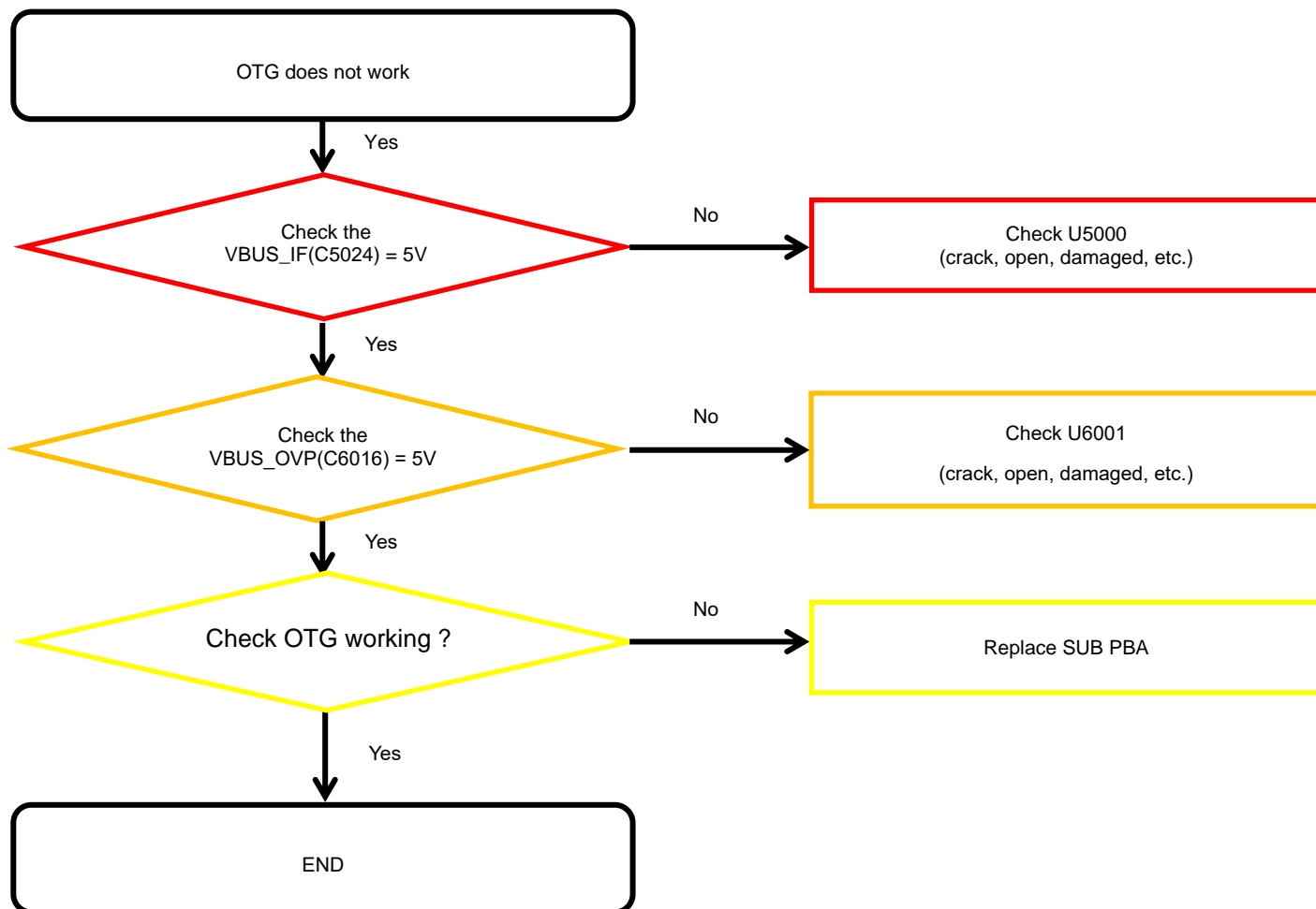
8. Level 3 Repair

8-4-6. Cable Charging Part



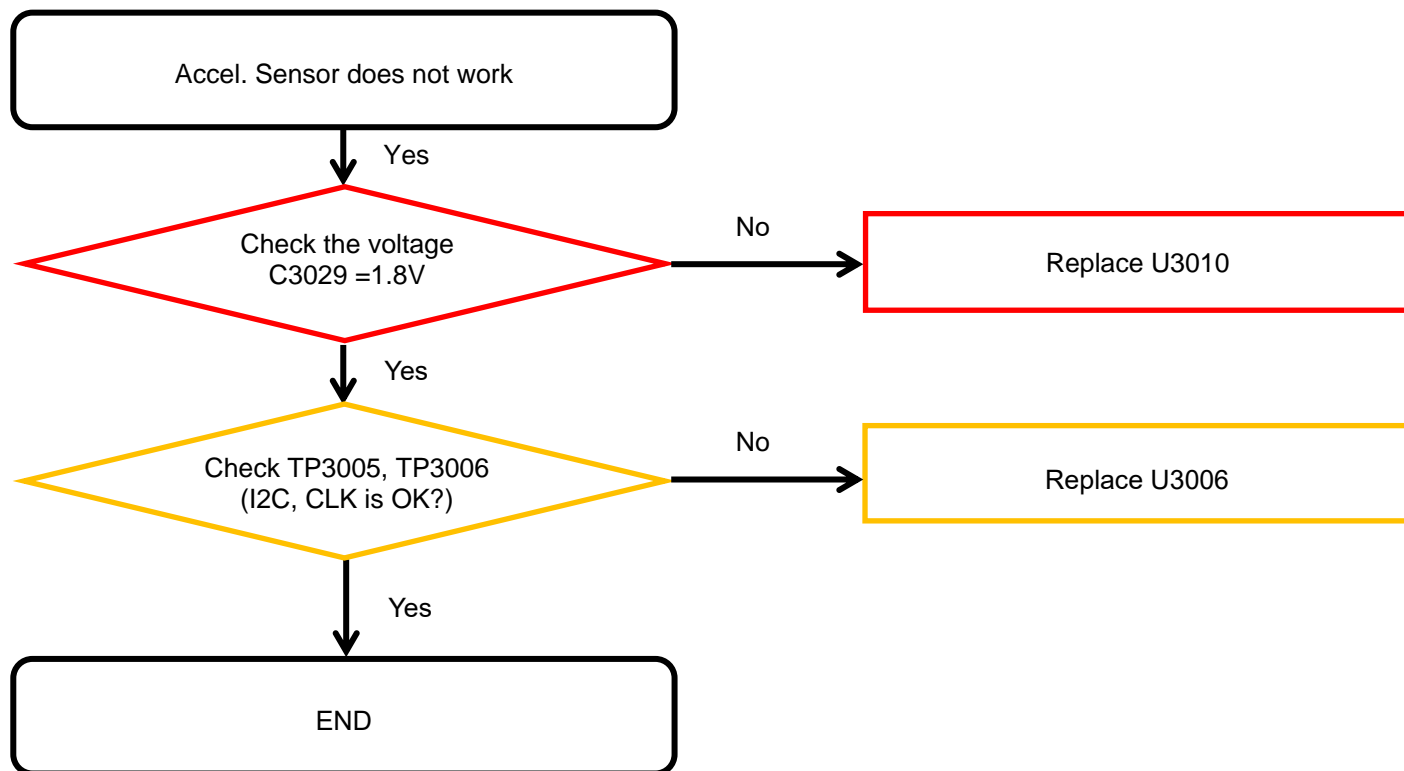
8. Level 3 Repair

8-4-7. OTG



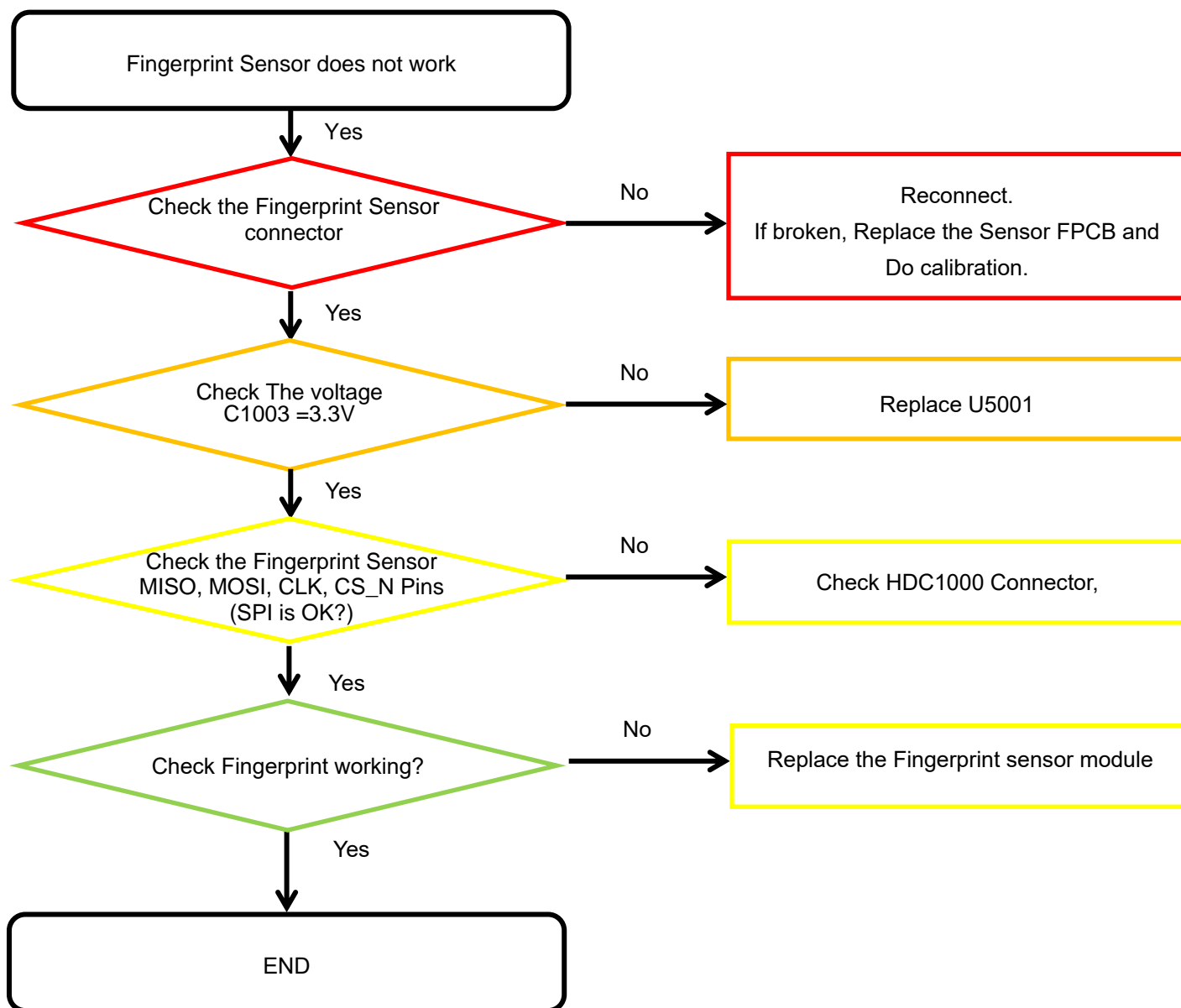
8. Level 3 Repair

8-4-8-1. Accel Sensor(6 AXIS)



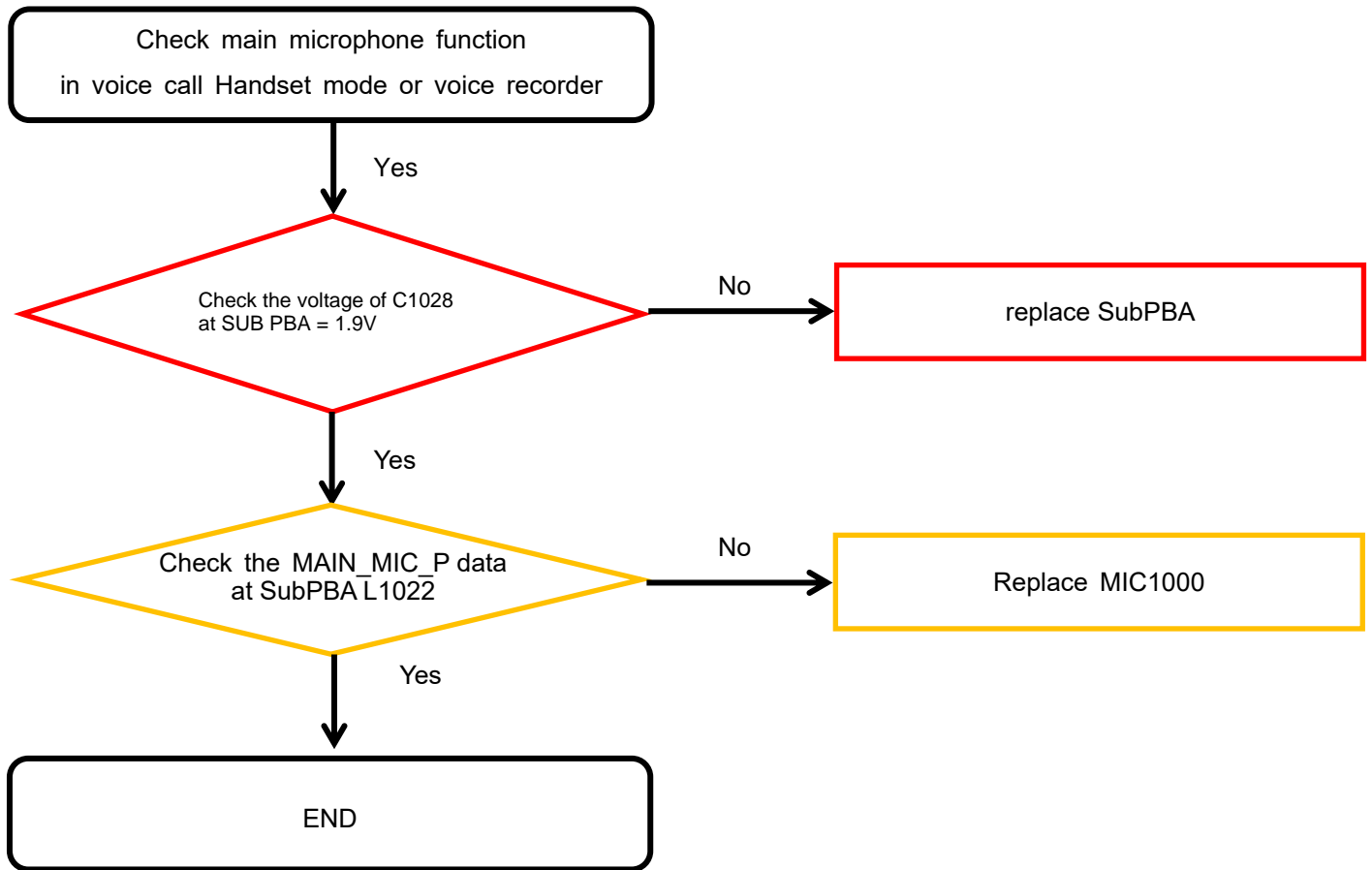
8. Level 3 Repair

8-4-8-2. Fingerprint Sensor



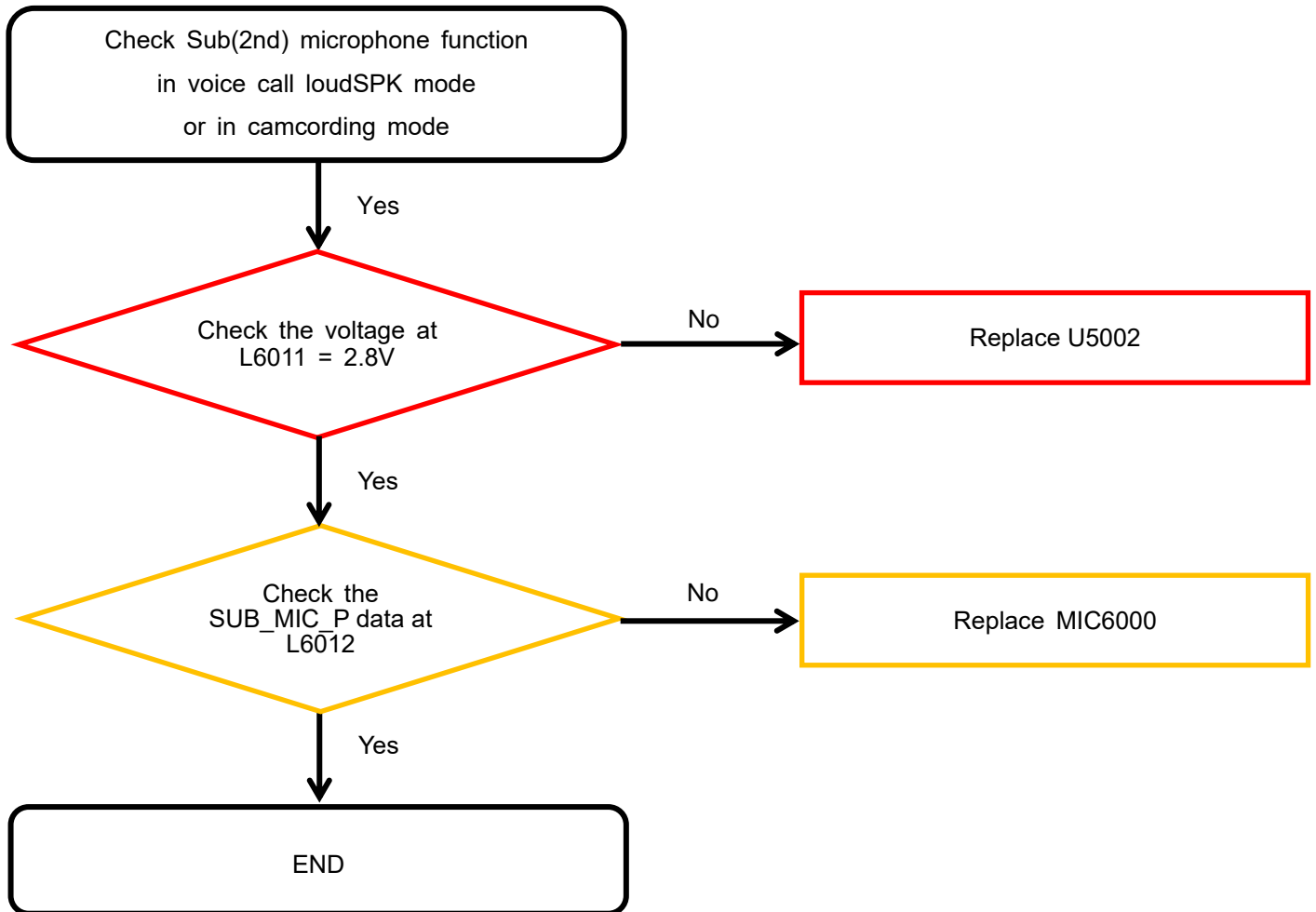
8. Level 3 Repair

8-4-9-1. Microphone Part - Main MIC



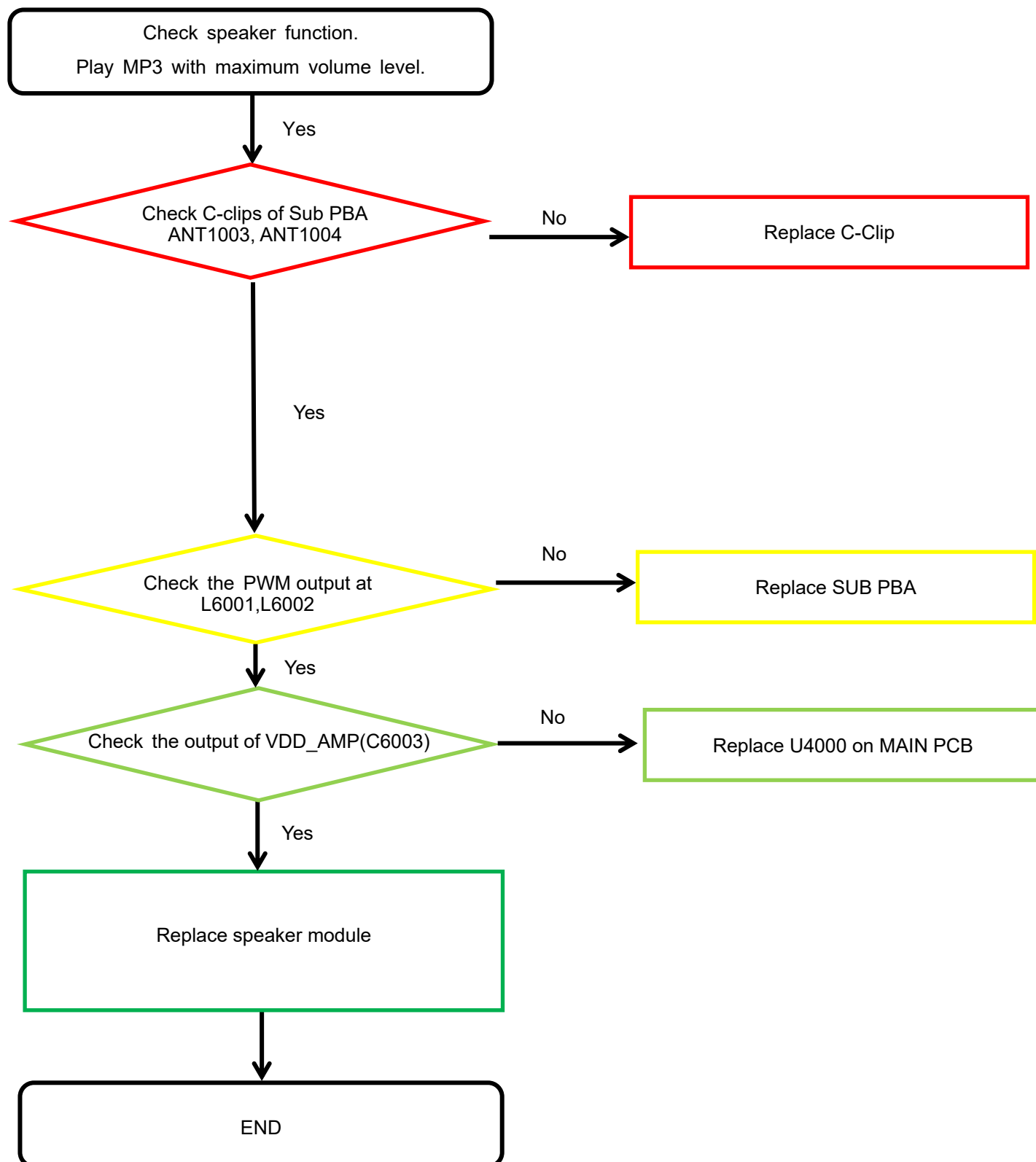
8. Level 3 Repair

8-4-9-2. Microphone Part - Sub(2nd) MIC



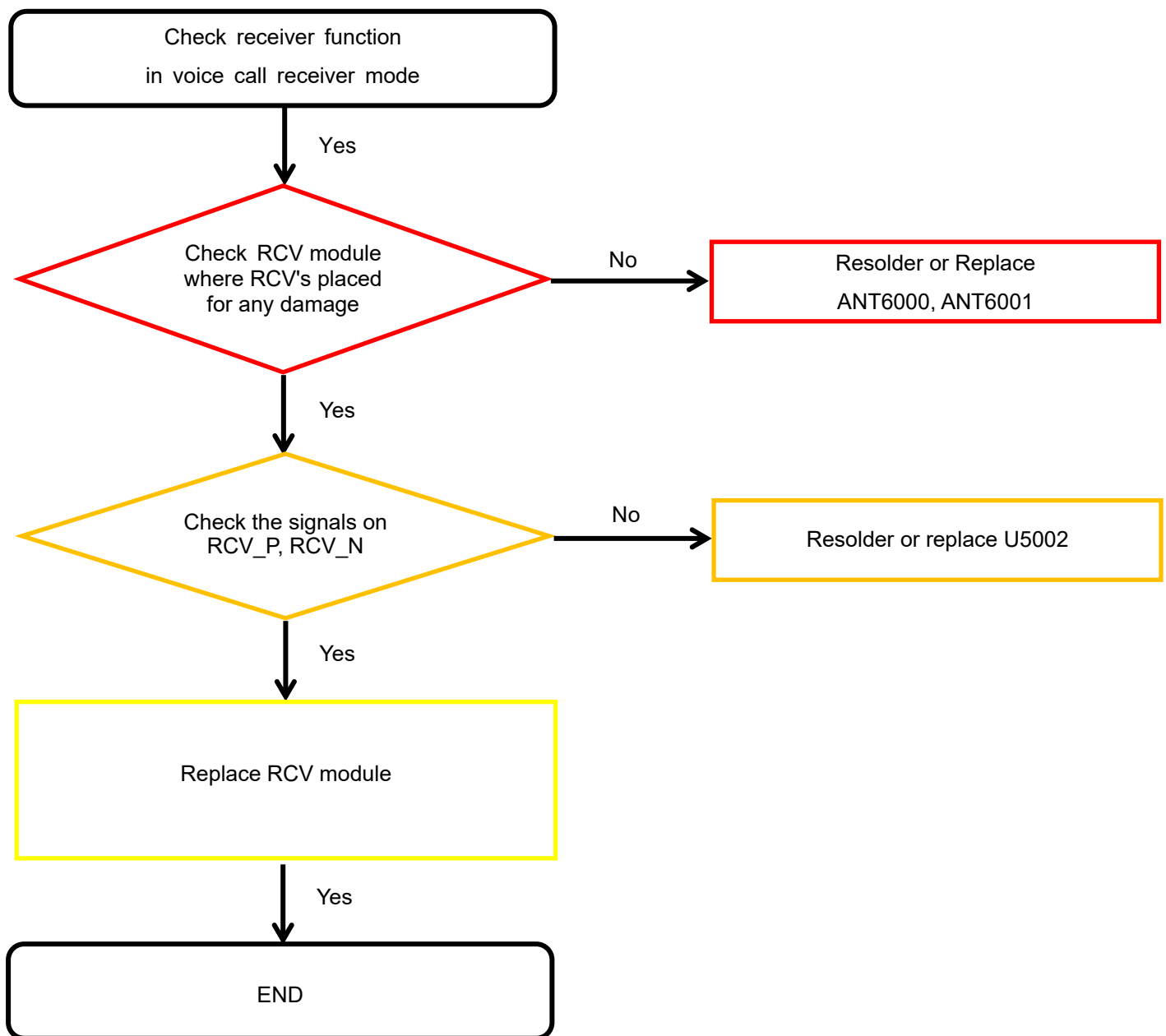
8. Level 3 Repair

8-4-10. Speaker Part



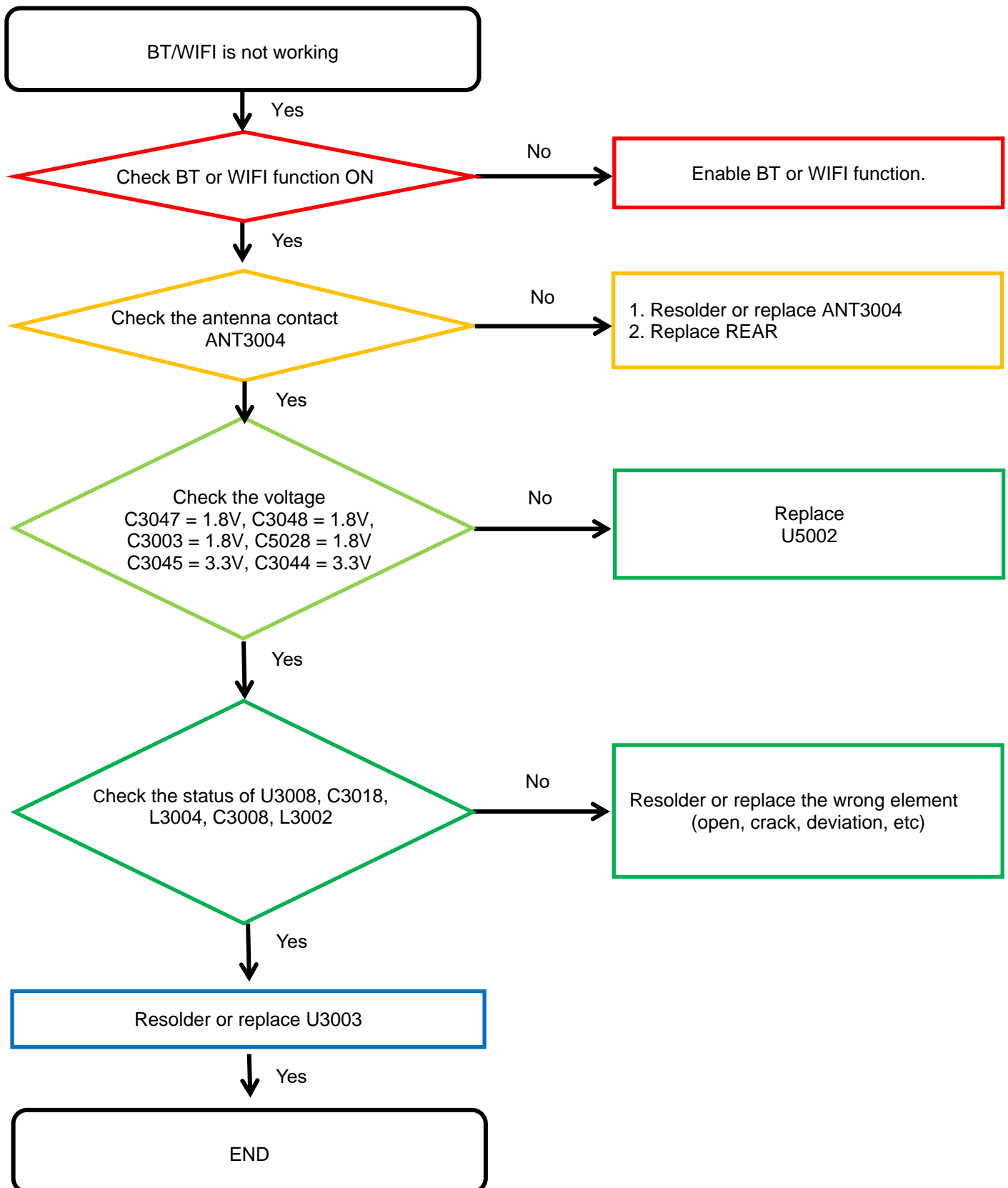
8. Level 3 Repair

8-4-11. Receiver Part



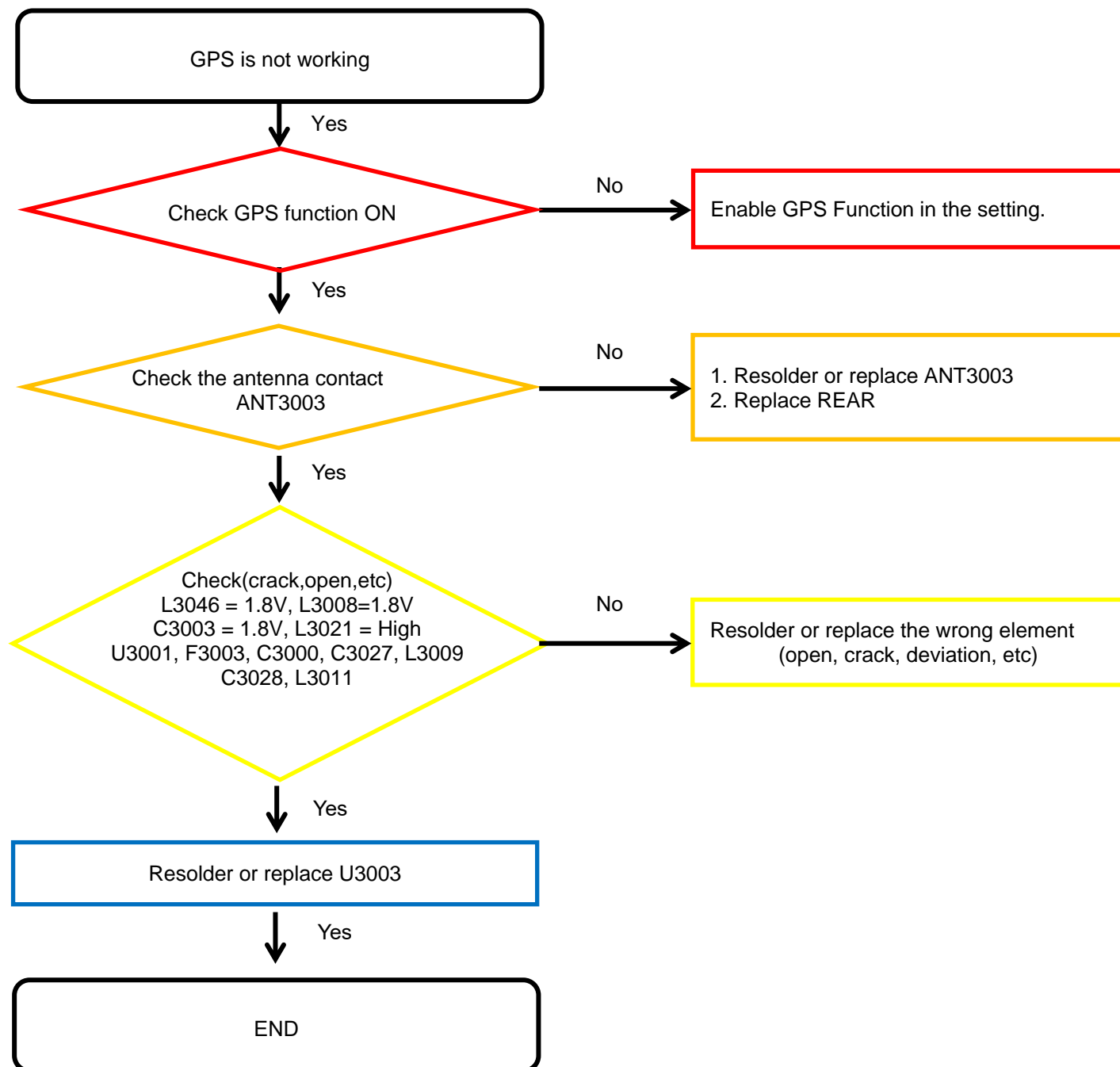
8. Level 3 Repair

8-4-12. BT/WIFI



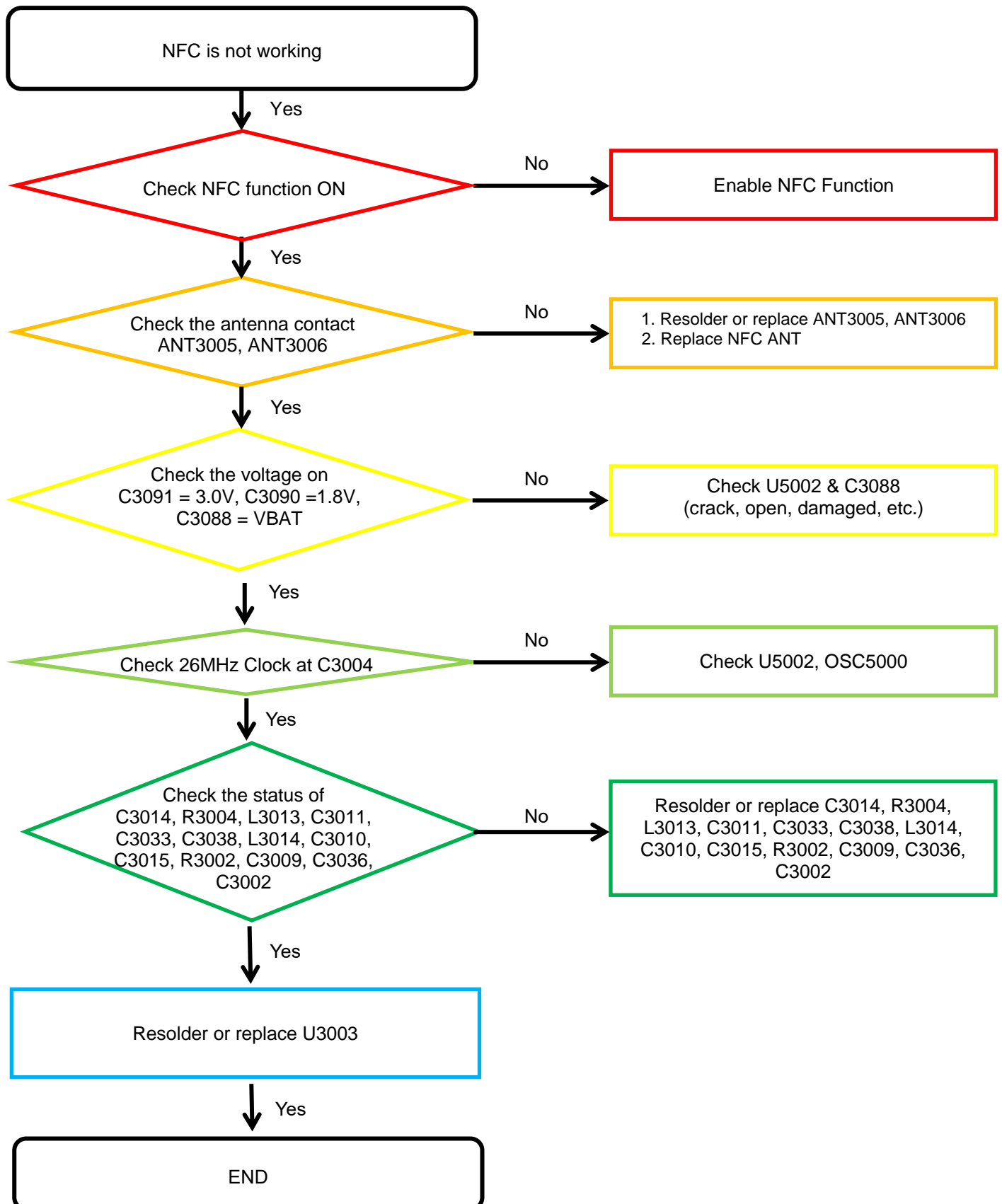
8. Level 3 Repair

8-4-13. GPS



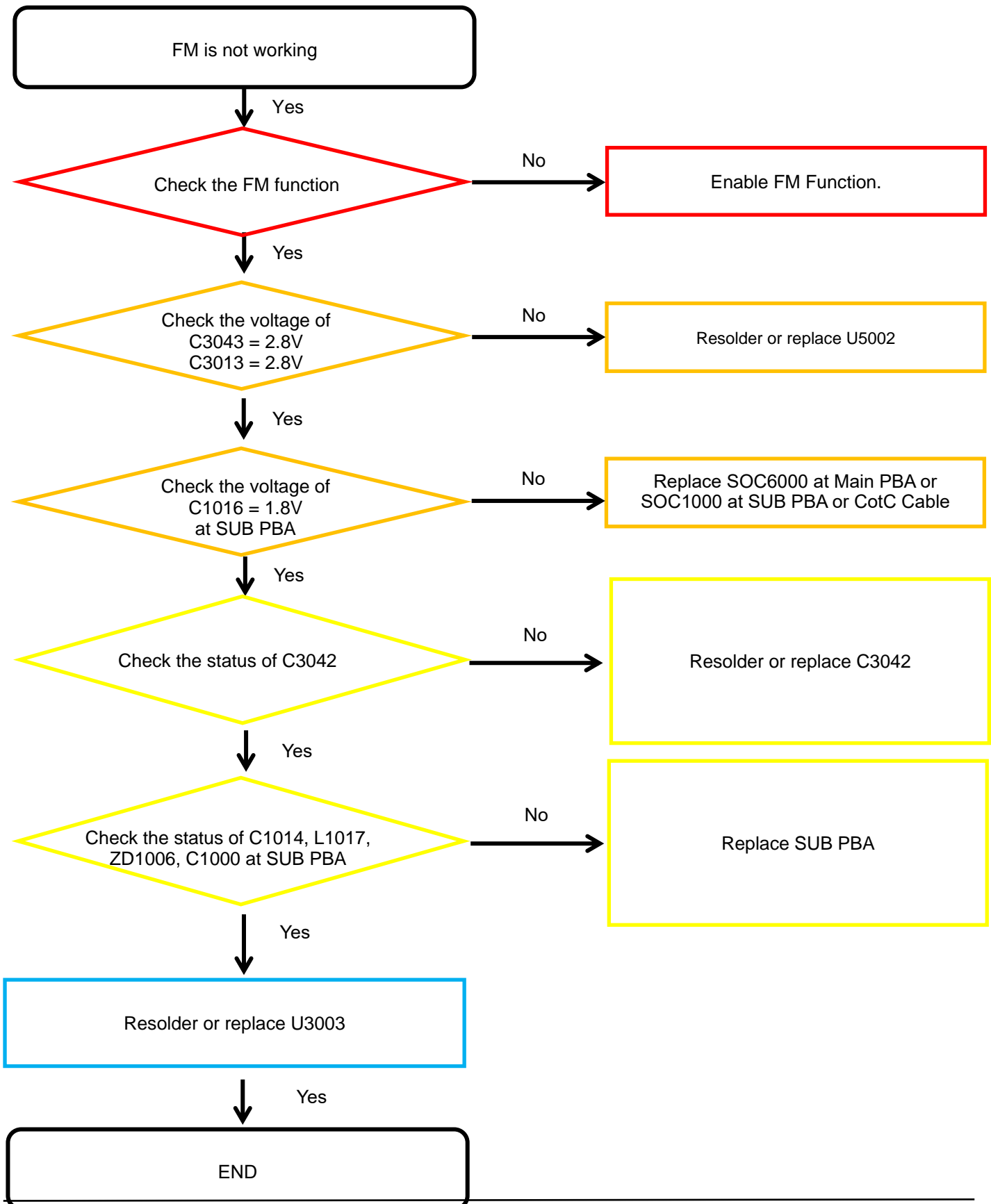
8. Level 3 Repair

8-4-14. NFC



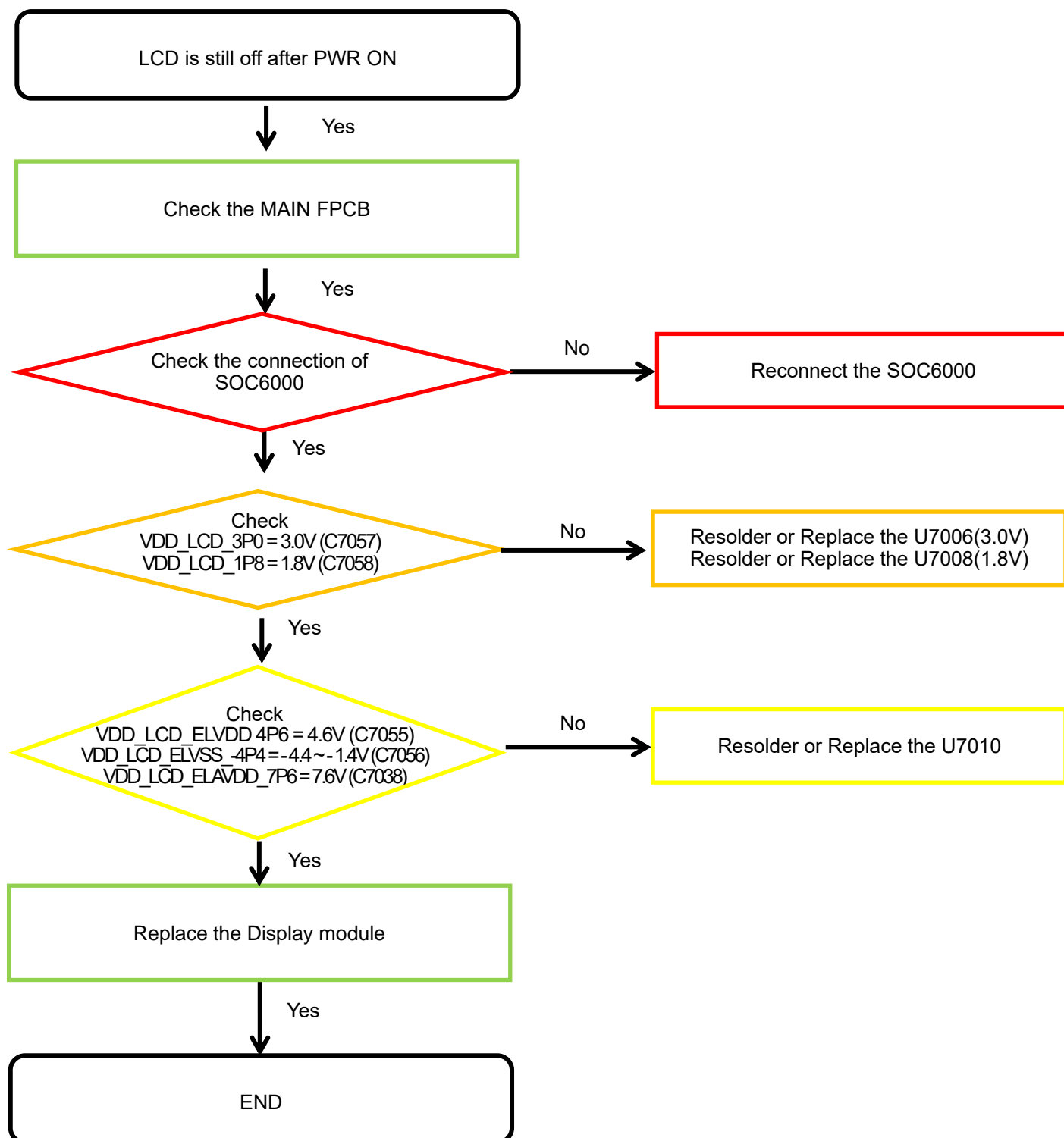
8. Level 3 Repair

8-4-15. FM radio part



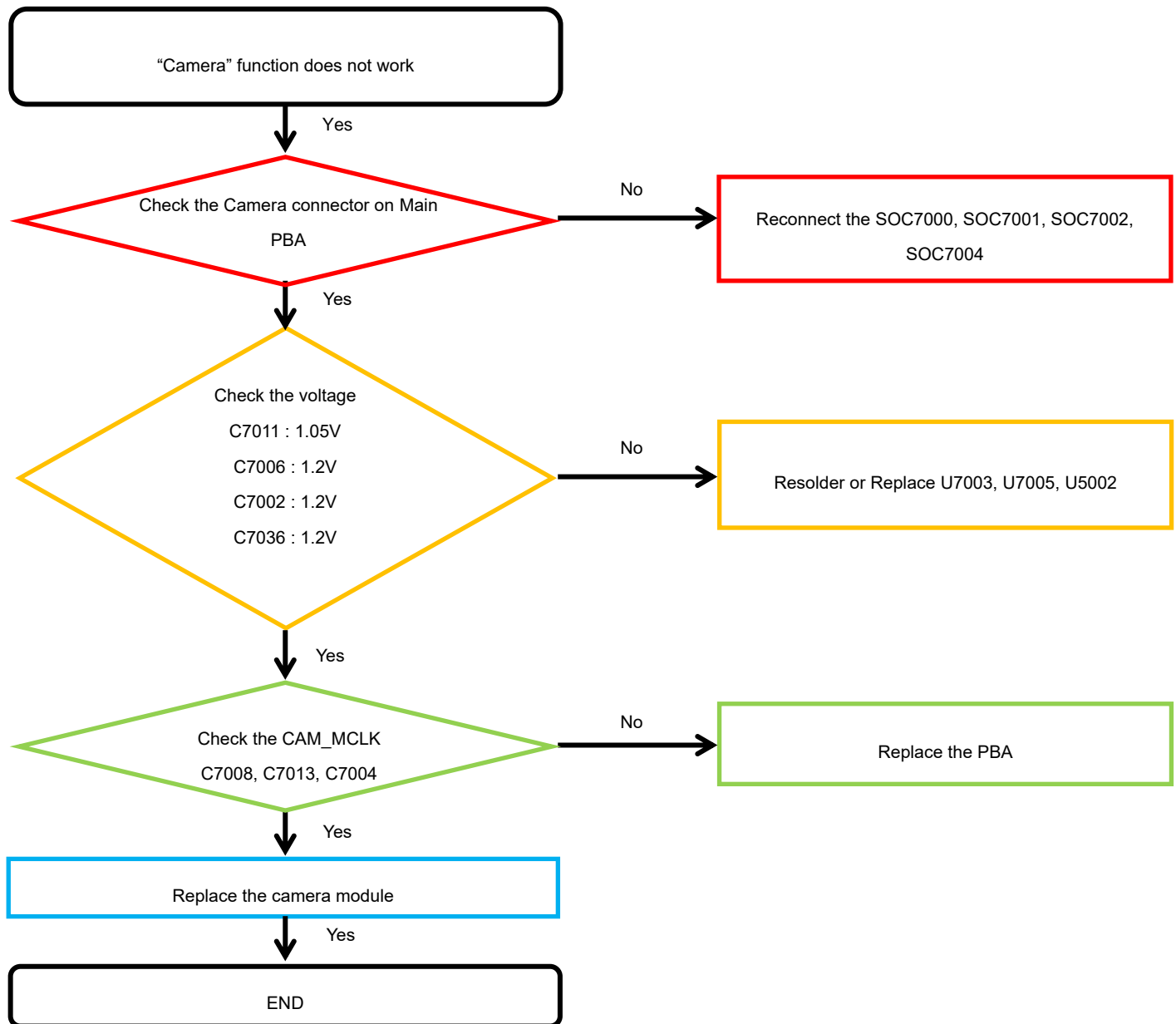
8. Level 3 Repair

8-4-16. Display



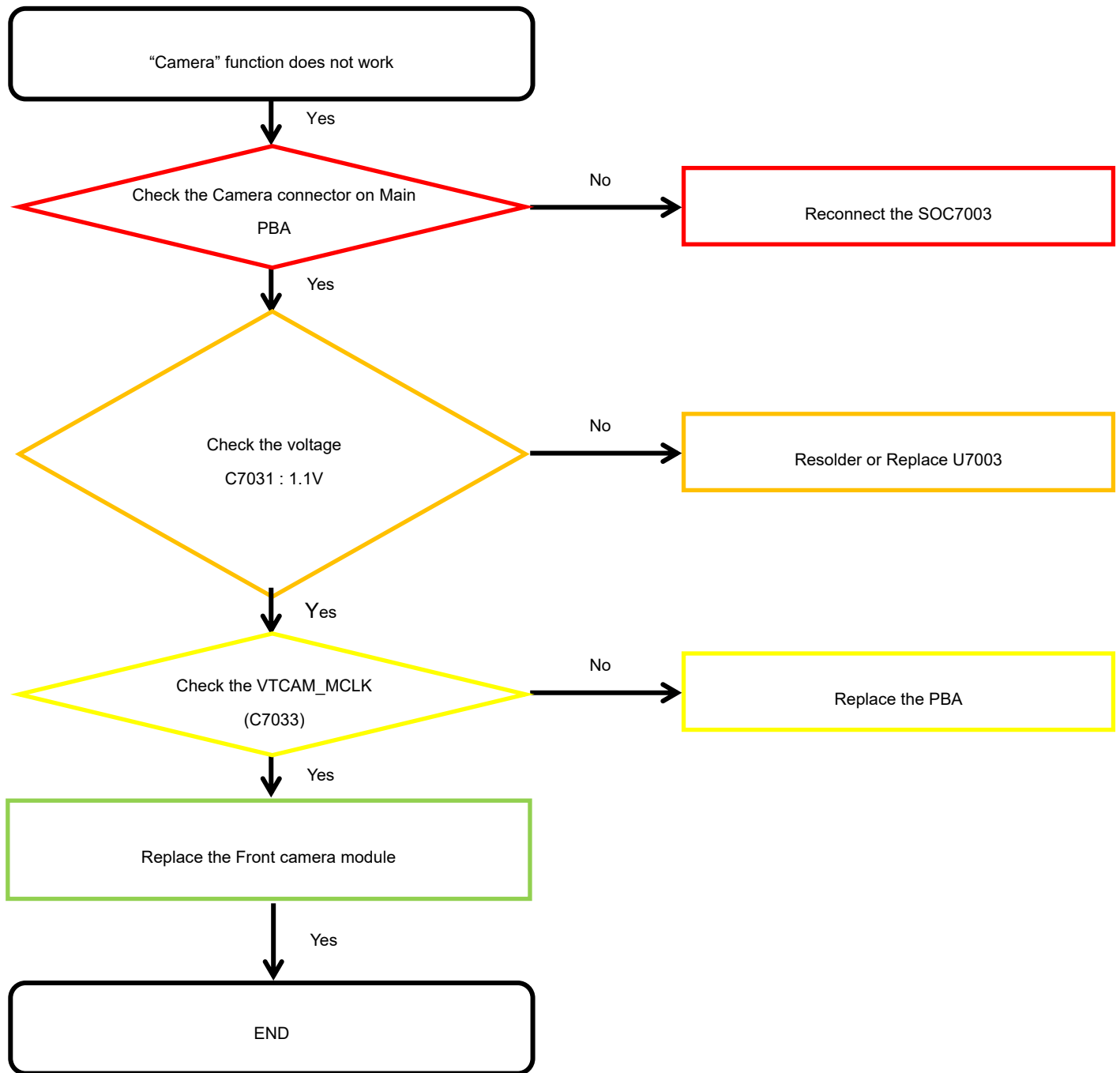
8. Level 3 Repair

8-4-17. REAR Camera



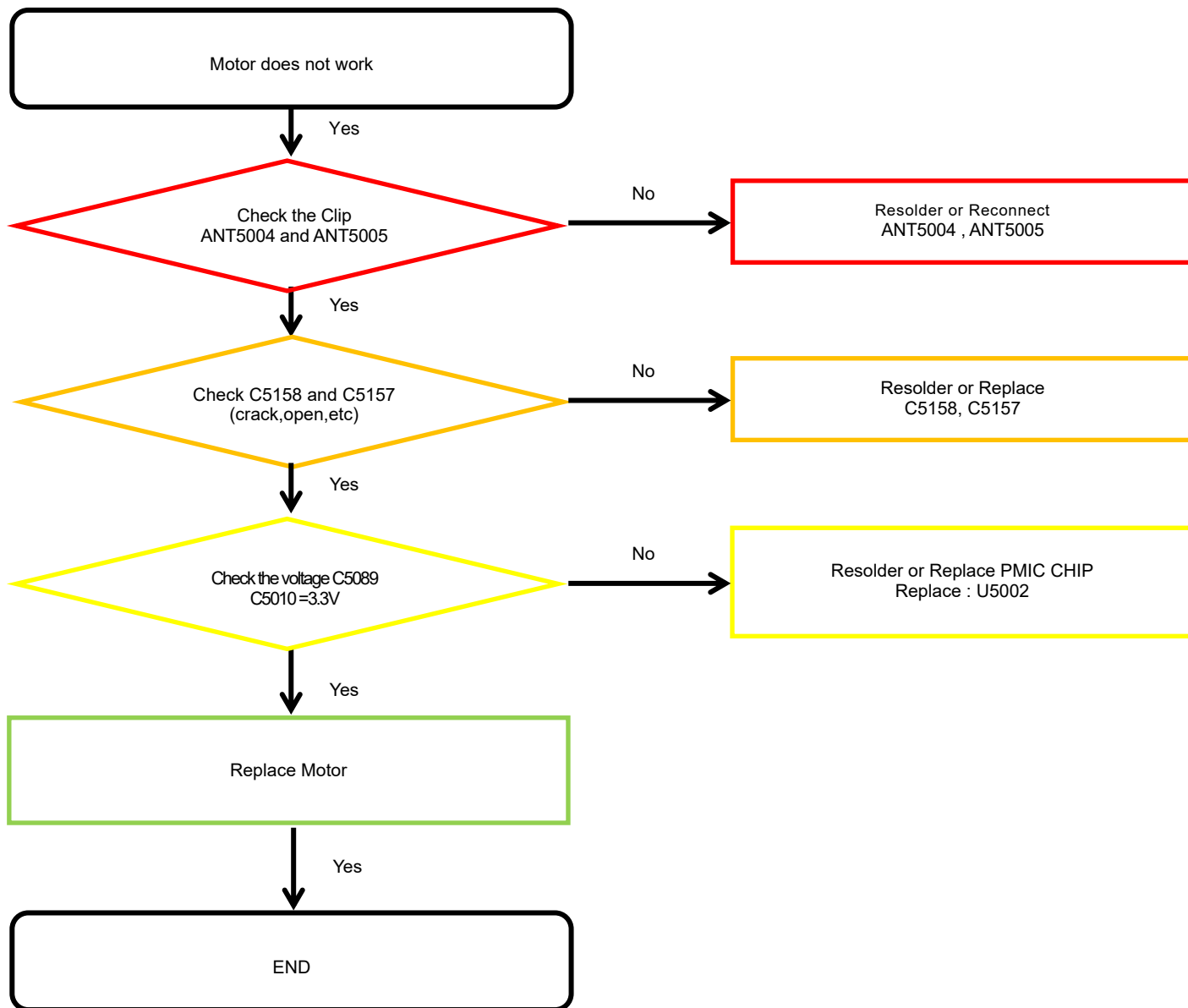
8. Level 3 Repair

8-4-18. FRONT CAMERA



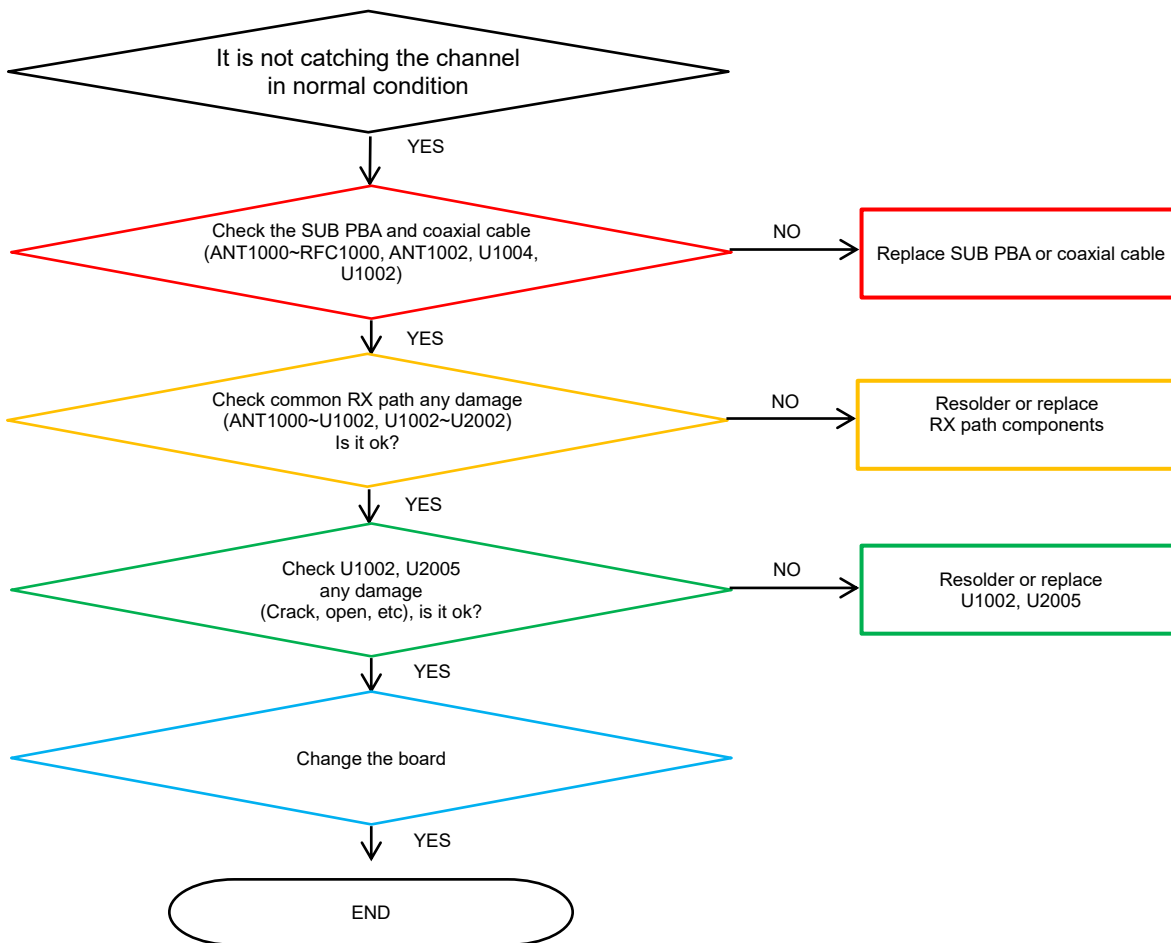
8. Level 3 Repair

8-4-19. Motor



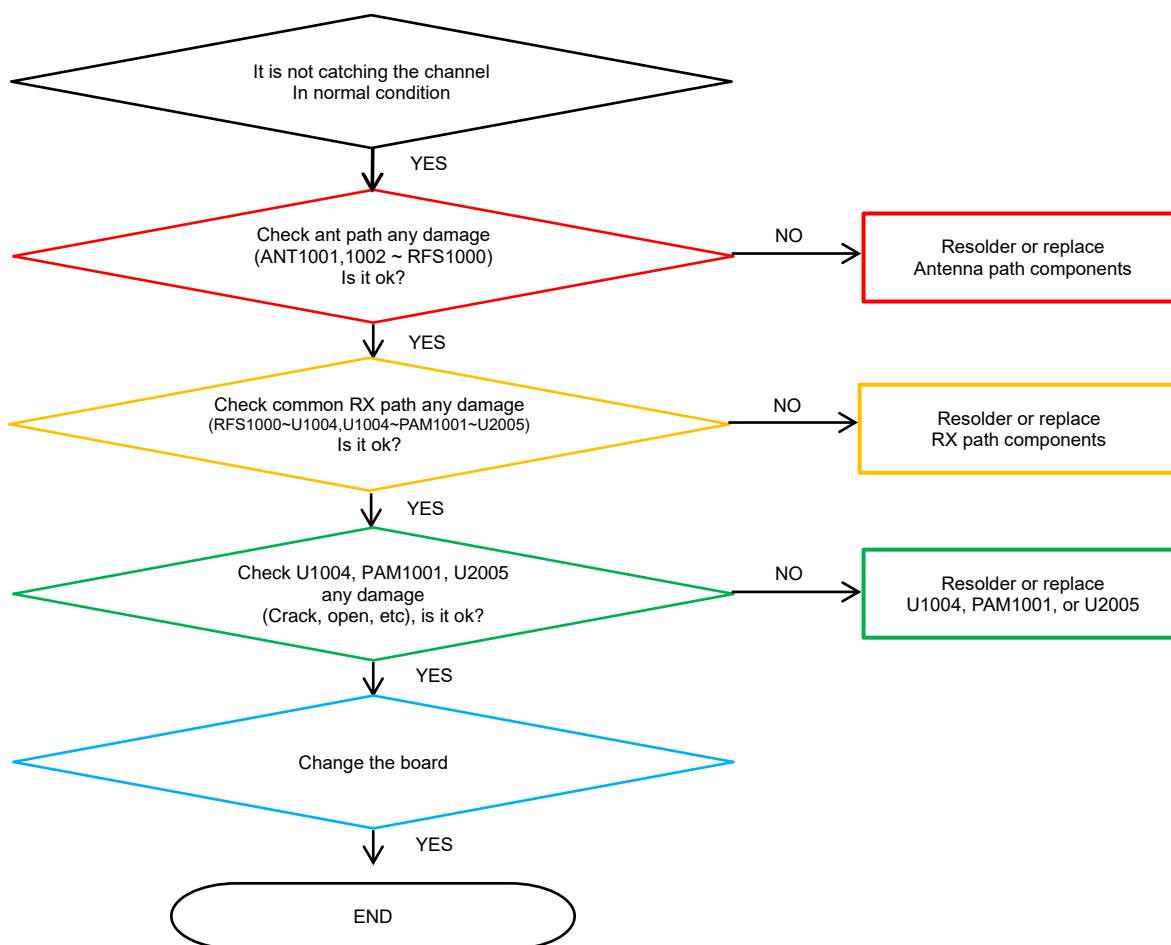
8. Level 3 Repair

8-4-20. GSM 850/900/1800/1900, WCDMA B1/2/4/5/8, LTE B1/2/3/4/5/8/12/13/17/20/26/28/66 PRx



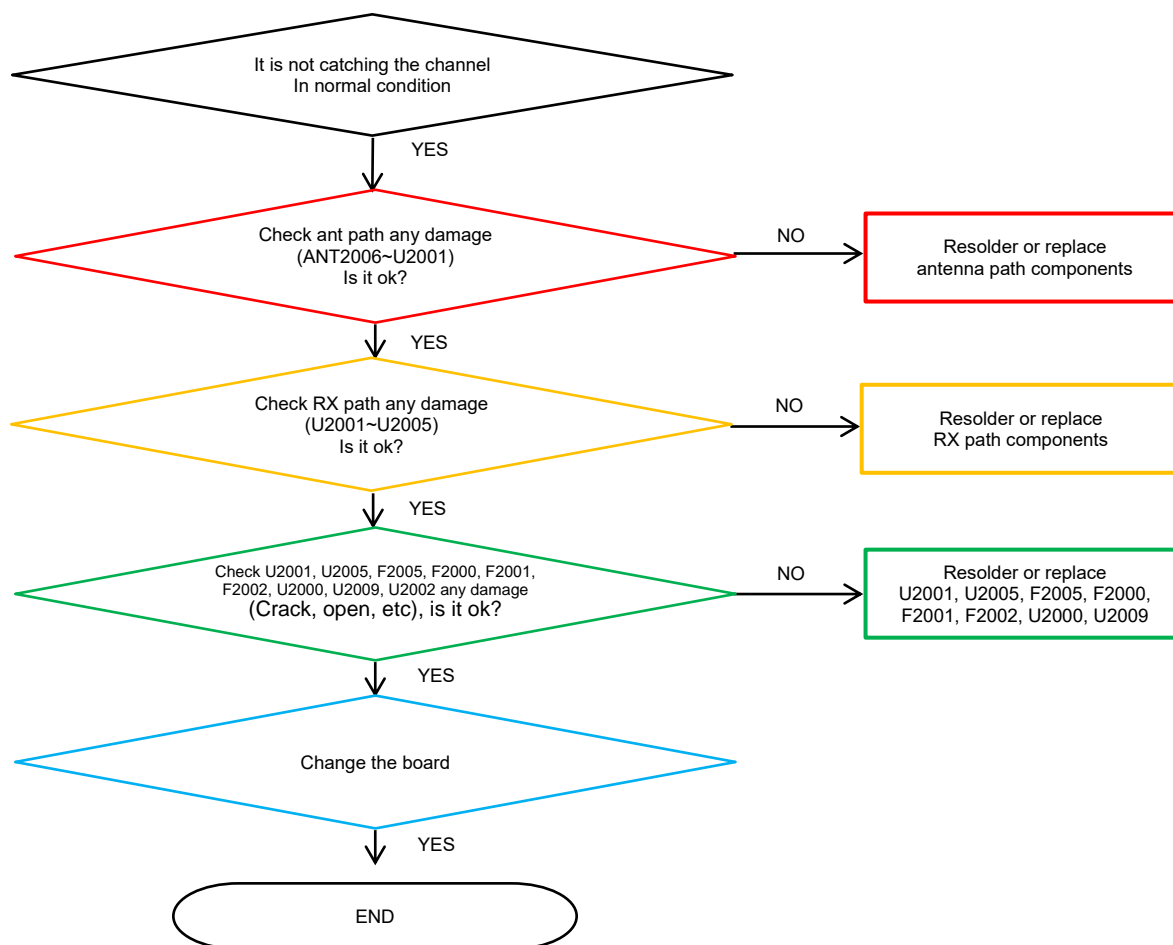
8. Level 3 Repair

8-4-21. LTE B7/38/40/41 PRx



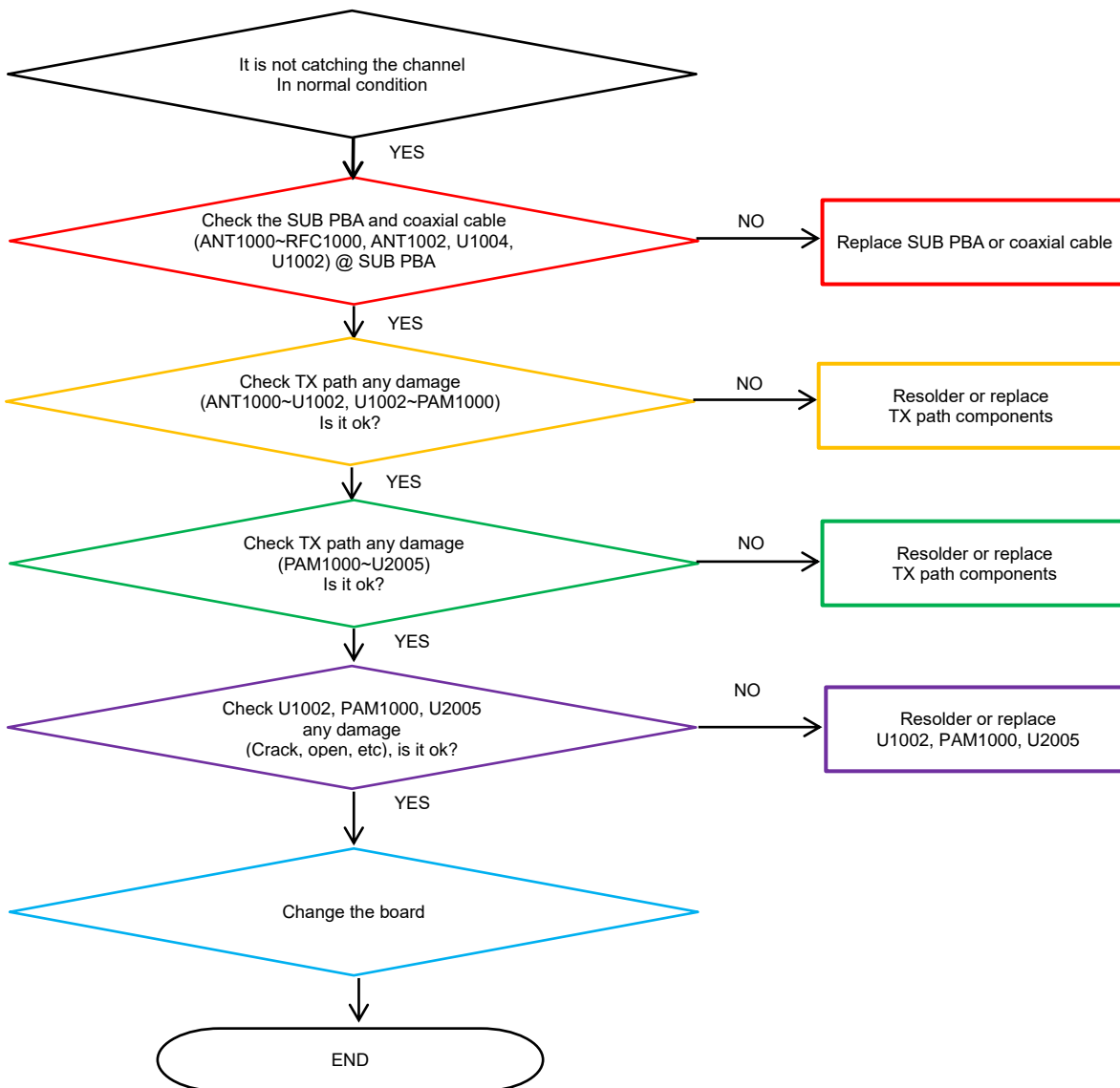
8. Level 3 Repair

8-4-22. GSM 850/900/1800/1900, WCDMA B1/2/4/5/8, LTE B1/2/3/4/5/7/8/12/13/17/20/26/28/38/40/41/66 DRx



8. Level 3 Repair

8-4-23. GSM 850/900/1800/1900, WCDMA B1/2/4/5/8, LTE B1/2/3/4/5/8/12/13/17/20/26/28/66 Tx



8. Level 3 Repair

8-4-24. LTE B7/38/40/41 Tx

